

RHOMBUS



NIMBUS 399

- APPLICATIONS**
- Care beds
  - Hospital beds
  - Intensive care beds
  - Medical appliances
  - OR beds
  - OR tables
  - Stretches
  - Gurneys

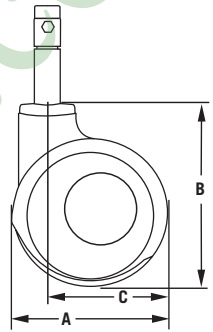
- FEATURES**
- Die-cast aluminum load-bearing housing
  - Highly polished plastic cover in white RAL 9016 or metallic
  - Unique design and patented technology
  - Precision ball bearings in the raceway
  - Autoclave safe
  - Smooth selection function
  - Integrated selection mechanism with total locking brake "Q" and position locking brake "R"
  - Load capacity 330 lb



399Q (Swivel with Total Lock)  
399R (Swivel with Total and Position Lock)



Available in Grey\*

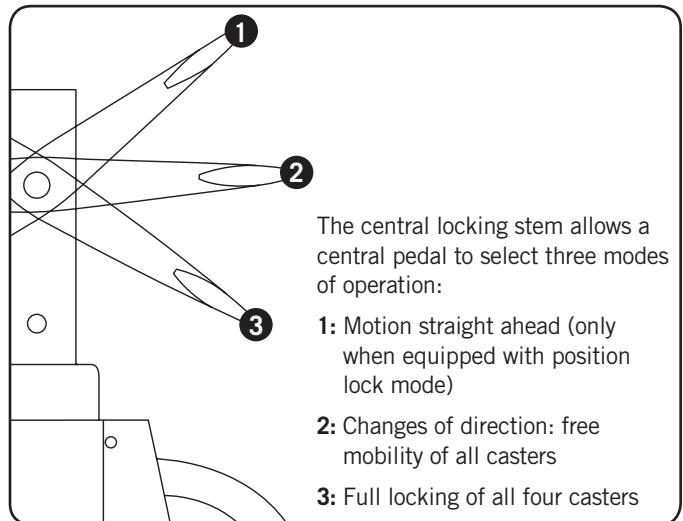


▼ DIMENSIONS

**399 Series**

A: Wheel Diameter	6" (150mm)
B: Overall Height	7 1/2" (188mm)
C: Swivel Radius	4 1/2" (117mm)

▼ PEDAL SETTINGS



▼ AWARDS



reddot design award  
winner 2006



RHOMBUS

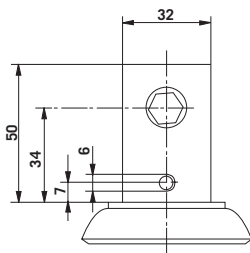


# NIMBUS 399

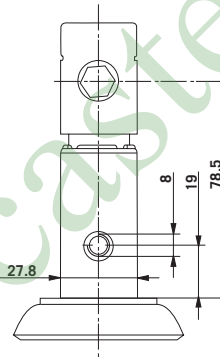
## ▼ SPECIFICATIONS

Wheel Diameter	Tread Width	Wheel Material	Wheel Bearing	Load Cap (lb)	Stem (78.5mm)	EDP	Stem (34mm)	EDP
6" (150mm)	1 1/4" (32mm)	Polyurethane	Precision	330	399Q38K150VK2351	02027	399Q38K150VK985	02144
6" (150mm)	1 1/4" (32mm)	Polyurethane	Precision	330	399R38K150VK2351	02028	399R38K150VK985	02145

The measurements in millimeters are exact.



- Stem diameter 32mm
- Two locking hole options available
- Locking hole in line or across direction of travel
- Four fixing holes



- Stem diameter 27.8mm
- Two locking hole options available
- Locking hole in line or across direction of travel
- Four fixing holes
- Snap-on adapter sleeves available for different tube dimensions

## ▼ MOUNTING OPTIONS

