

## BUMPERS



End Bumper EB-1

Grey end bumper generally used on the ends of tubular handles; 3-1/4" diameter with steel insert for 5/16" bolt.



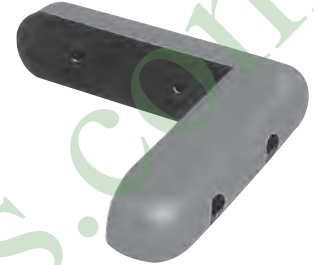
Corner Bumper CB-8

Grey corner bumper for mounting on flat surfaces. 7/8" thick x 1" high x 2-5/8" long from inside corner.



Corner Bumper CB-10

Grey corner bumper for mounting on flat surfaces; ends of legs are tapered, with steel inserts. 1" thick x 1-1/16" high x 3-1/16" long from inside corner.



Corner Bumper CB-12

Grey corner bumper for mounting on flat surfaces; ends of legs may be cut at notched area to make square ends, with steel inserts. 7/8" thick x 1" high x 3-1/8" long from inside corner.



Tubing Bumper B-3-1/2

3-1/2" diameter bumper fits 1" O.D. round (TB3.5R) or square (TB3.5S) tubing



Rolling Bumper RB-5 & RB-7

5" and 7" diameter rolling bumpers; tapered grey rubber bonded to a zinc-plated insert with removable center bushings to fit diameters from 3/8" to 1-1/8"