

ROOSE

SERIES

Forged Steel Body Dolly Caster

Load Capacity: 3,000 lbs.

Quality Features

- **SPECIAL KING BOLT ASSEMBLY.**
Utilizes a special SAE-8640 hardened steel king bolt to meet the severe and rugged demands of automotive line assembly. Used with a slotted nut to allow for proper bearing adjustment whenever necessary.
- **HOT FORGED STEEL CONSTRUCTION.**
Top plate, yoke base and bearing retainer are hot forged using SAE-1050 hardening quality steel. Raceways are precision machined for 1/2" hardened chrome steel load bearings and tapered thrust bearing.
- **COMPLETELY HEAT-TREATED.**
All metal parts, including wheel, axle bolt and nut, are heat-treated to a specific molecular depth and Rockwell hardness.
- **EMBOSSSED AND WELDED FORK LEGS.**
Side forks are embossed and continuously welded on both sides for added strength.
- **OPTIONAL WHEEL BEARINGS**
Drop forged wheel is offered with either straight or tapered roller bearings. Metal seal is also available with straight roller bearing.

SWIVEL



Designed to automotive standards for car and truck body assembly lines. Hot forged top plate, yoke base and bearing retainer are made with SAE-1050 steel and features a strong king pin with slotted adjusting nut. Raceways are flame hardened for longer life and better performance.

Typically used for:

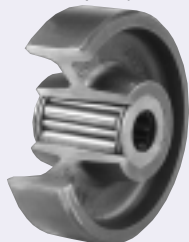
- Body Line Assembly
- Service Carts
- Conveyor Tow Lines
- Pallet Haulers
- Large Scrap Bins

The rugged design and material strength makes this caster stand alone, whether used on automotive assembly lines or in general industrial applications. Standard finish is either red or blue enamel.

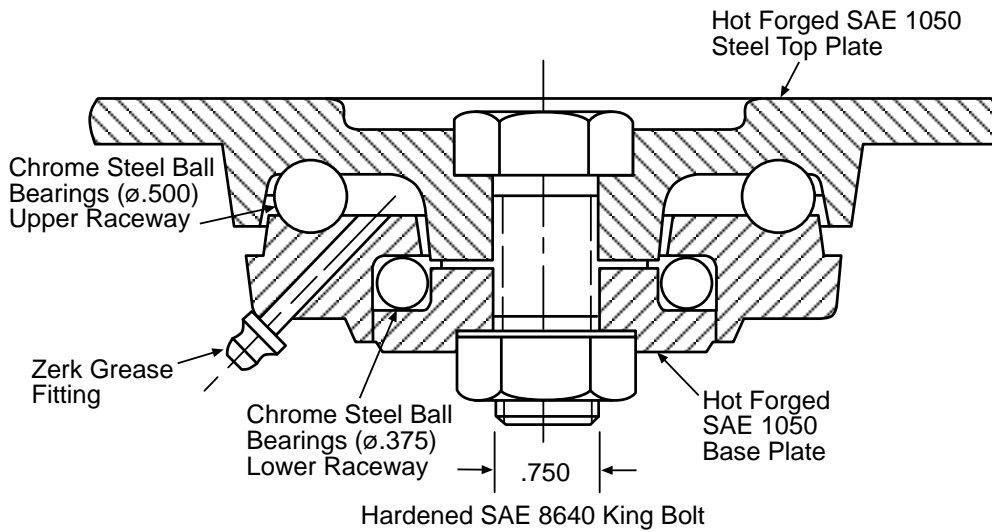
Wheel Selection

DROP FORGED STEEL

PAGE 140

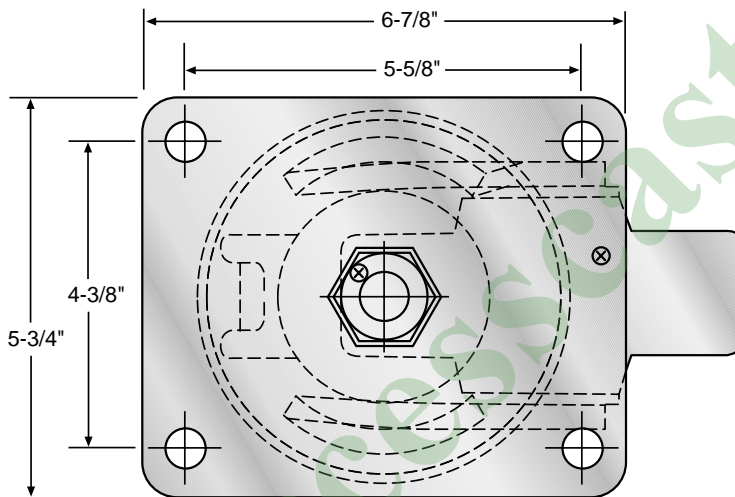


**SWIVEL BEARING RACEWAY
R695 SERIES**



*Forged
Steel Body
Dolly Caster*

TOP PLATE



Diameter	Tread Width	Load Capacity	Wheel Material	Bearing	Swivel Part Number	Rigid Part Number	Approx. Weight	Overall Height	Swivel Radius
5 ³ / ₄	1 ³ / ₄	3000	DROP FORGED STEEL	ROLLER	SC-695-C	N/A	21	7-5/8	4-5/8
				TAPERED ROLLER	SC-695-CZ	N/A			
					SC-695-D	N/A			

Members of:

NSF
NATIONAL SANITATION FOUNDATION

MATERIAL HANDLING INDUSTRY OF AMERICA

Inflight
Food Service Association

WORLDWIDE D-I-Y COUNCIL

icm
INSTITUTE OF CASTER MANUFACTURERS

UL
UNDERWRITERS LABORATORY

INDUSTRY MANUFACTURERS COUNCIL

nafem