

R650

SERIES

Heavy Duty
Forged Steel

Load Capacity: 540 to 3,300 lbs.

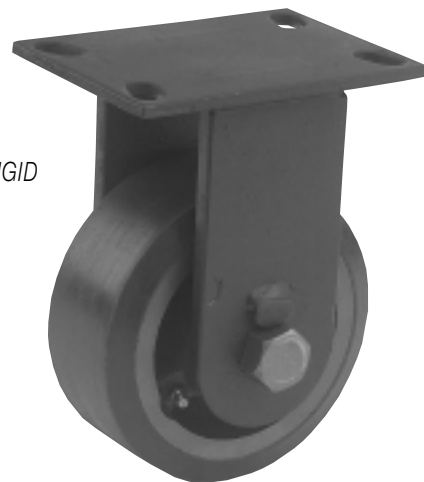
Quality Features

- INTEGRALLY FORGED KING PIN.**
 Solid 1" king pin is integrally forged with upper raceway using SAE-1050 quality grade steel. Used with a slotted nut to allow for proper bearing adjustment whenever necessary. Designed to be virtually indestructible!
- HOT FORGED STEEL CONSTRUCTION.**
 Top plate, yoke base and bearing retainer are hot forged using SAE-1050 hardening quality steel. Raceways are precision machined for 1/2" hardened chrome steel load bearings and tapered thrust bearing.
- FLAME HARDENED SWIVEL RACEWAY.**
 All bearing raceways are flame hardened to extend service life, reduce brinelling from shock loads, and to generally improve swivel performance.
- EMBOSSSED AND WELDED FORK LEGS.**
 Side forks are embossed and continuously welded on both sides for added strength.
- LOCKED WHEEL AXLE.**
 Steel axle bolt is locked in position with indexing lance in side fork to prevent unwanted movement.

SWIVEL



RIGID



The 650 series offered with an industry standard top plate size and mounting bolt pattern, but it delivers above standard performance for strength and durability. Hot forged top plate-yoke base and bearing retainer are made with SAE-1050 steel and features a strong integrated king pin with slotted adjusting nut. Raceways are flame hardened for longer life and better performance.

Common applications include:

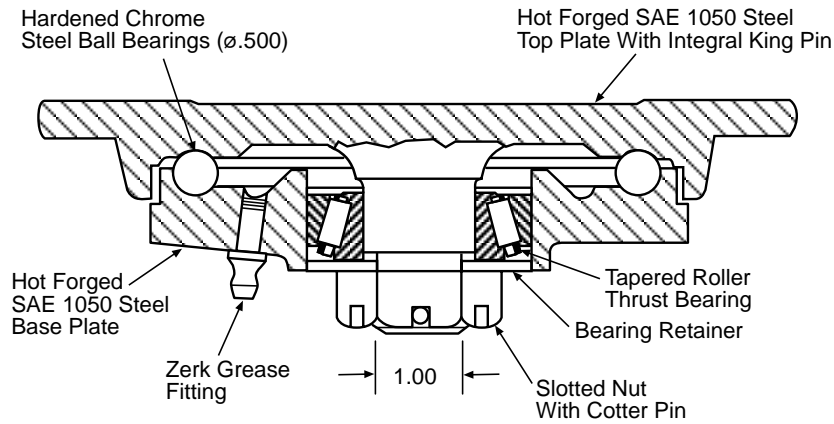
- Towing Trailers
- Wire and Steel Storage
- Auto Tire Hauling
- Movable Drum Pallets
- Freight and Cargo Handling

Standard mounting plate dimensions make this caster easy to retrofit on existing equipment. Standard finish is industrial blue enamel.

Wheel Selection

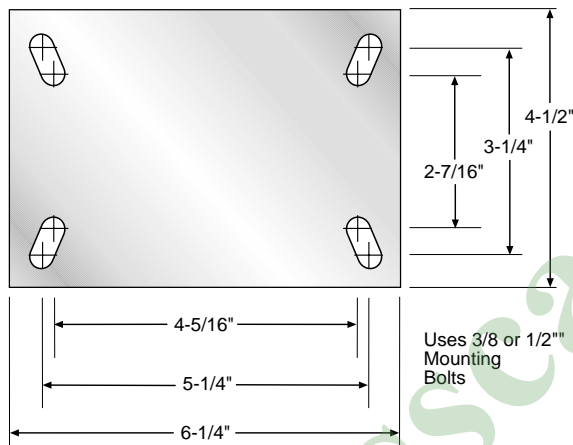
CAST IRON HUB	CAST IRON HUB	CAST IRON HUB	PHENOLIC	CAST IRON	ADVANCED ELASTOMER
MOLD-ON RUBBER	MOLD-ON POLYURETHANE	MOLD-ON SOFT POLY			
PAGE 120	PAGE 128	PAGE 130	PAGE 134	PAGE 138	PAGE 106

SWIVEL BEARING RACEWAY R650 SERIES



*Heavy Duty
Forged Steel*

TOP PLATE



Diameter	Tread Width	Load Capacity LBS	Wheel Material	Bearing	Swivel Part Number	Rigid Part Number	Approx. Weight LBS	Overall Height	Swivel Radius
6	2	2000	DROP FORGED STEEL	TAPERED ROLLER	SC-651-6-FS	RC-651-6-FS	18	7-3/4	5
					SC-653-6-FS	RC-653-6-FS	18-1/2	8-1/4	4-5/8
	540	MOLD-ON RUBBER	SC-652-6-RS		RC-652-6-RS	18-2/5	7-3/4	5	
	960	SOFT POLY / CAST IRON HUB	SC-654-6-RS		RC-654-6-RS	18-9/10	8-1/4	4-5/8	
			SC-652-6-PS8		RC-652-6-PS8	21-1/10	7-3/4	5	
	2 1/2	1600	ADVANCED ELASTOMER		SC-654-6-PS8	RC-654-6-PS8	21-3/5	8-1/4	4-5/8
				ROLLER	SC-652-6-TAE	RC-652-6-TAE	21-1/10	7-3/4	5
			PHENOLIC	SC-654-6-TAE	RC-654-6-TAE	21-3/5	8-1/4	4-5/8	
				PRECISION BALL	SC-652-6-PXAE	RC-652-6-PXAE	21-1/10	7-3/4	5
			POLYURETHANE / CAST IRON HUB	SC-654-6-PXAE	RC-654-6-PXAE	21-3/5	8-1/4	4-5/8	
				TAPERED ROLLER	SC-652-6-PR	RC-652-6-PR	14-1/10	7-3/4	5
	8	2 1/2	670	MOLD-ON RUBBER	TAPERED ROLLER	SC-654-6-PR	RC-654-6-PR	14-3/5	8-1/4
SC-652-6-PS						RC-652-6-PS	21-1/10	7-3/4	5
1800			SOFT POLY / CAST IRON HUB	TAPERED ROLLER	SC-654-6-PS	RC-654-6-PS	21-3/5	8-1/4	4-5/8
					SC-652-6-CI	RC-652-6-CI	23	7-3/4	5
2000			ADVANCED ELASTOMER	TAPERED ROLLER	SC-654-6-CI	RC-654-6-CI	23-1/2	8-1/4	4-5/8
					ROLLER	SC-655-8-RS	RC-655-8-RS	24-1/5	10-1/8
	PRECISION BALL	SC-655-8-PS8			RC-655-8-PS8	25-4/5			
	SC-655-8-TAE	RC-655-8-TAE			18				
3100	CAST IRON	TAPERED ROLLER	SC-655-8-PXAE	RC-655-8-PXAE	25-4/5				
			SC-655-8-PS	RC-655-8-PS	25-4/5				
10	2 1/2	790	MOLD-ON RUBBER	TAPERED ROLLER	SC-655-8-CI	RC-655-8-CI	29-7/10	12-1/4	7-1/2
					SC-656-10-RS	RC-656-10-RS	34-4/5		
		2000	ADVANCED ELASTOMER	TAPERED ROLLER	SC-656-10-TAE	RC-656-10-TAE	37-3/10		
					ROLLER	SC-656-10-PXAE	RC-656-10-PXAE		
		2160	SOFT POLY / CAST IRON HUB	TAPERED ROLLER	SC-656-10-PR	RC-656-10-PR	21-1/5		
					PRECISION BALL	SC-656-10-PS	RC-656-10-PS		
3300	CAST IRON	TAPERED ROLLER	SC-656-10-PS	RC-656-10-PS	37-3/10				
			SC-656-10-CI	RC-656-10-CI	34-7/10				