

Load Capacity: 6,000 to 10,000 lbs.

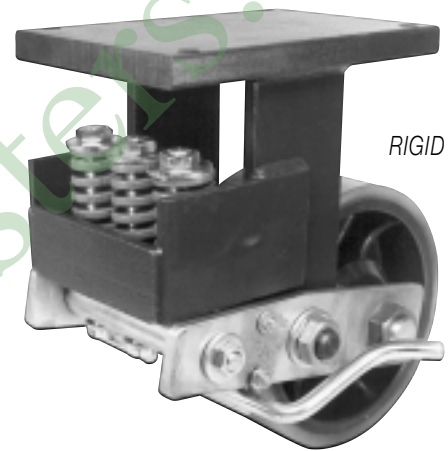
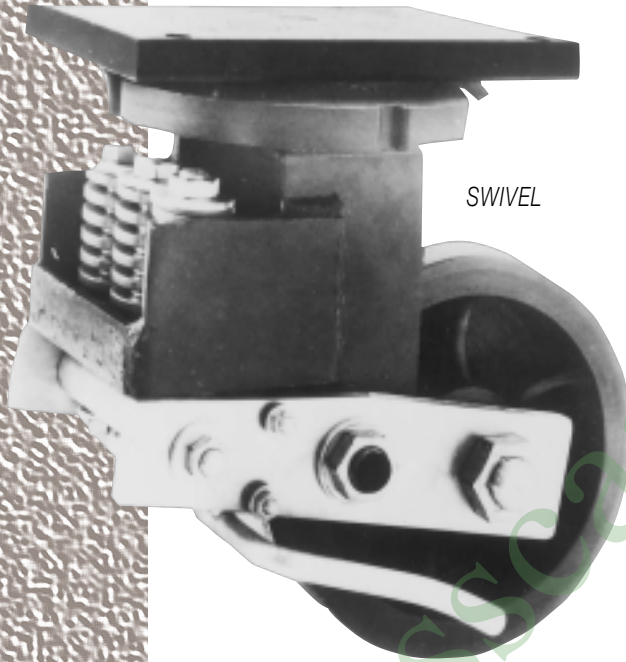
SHOCK ABSORBING

5100 SERIES

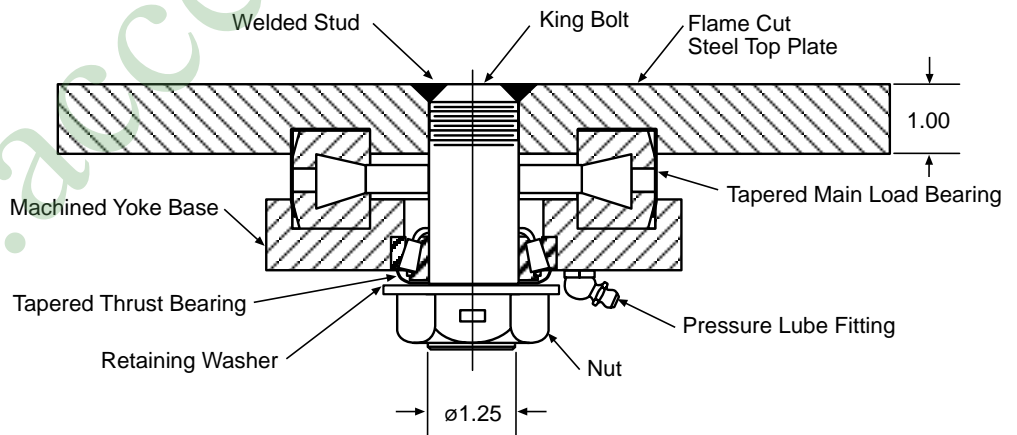
Extra-Heavy Duty
Shock Absorbing

Quality Features

Fabricated with a super heavy-duty three-spring system, this is our premium shock-absorbing caster for extremely heavy loads. Upper raceway top plate and base plate are flame cut from 1" thick steel and precisely machined by CNC lathe to very close tolerances and dimensions. Pressure fitting is supplied in base plate for lubrication. Both upper main load bearing and lower thrust bearing utilize heavy-duty tapered roller bearings for maximum mobility under heavy loads and to withstand lateral forces. Extra-large 1-1/4" king bolt is threaded and securely fastened at both ends to ensure a solid fit. The stud is welded to the top plate to prevent loosening, while the nut is tightened to exact specifications. Standard finish is Laguna Blue.



SWIVEL BEARING RACEWAY- 5100 SERIES

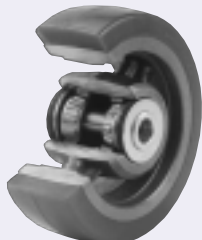


Wheel Selection

CAST IRON HUB

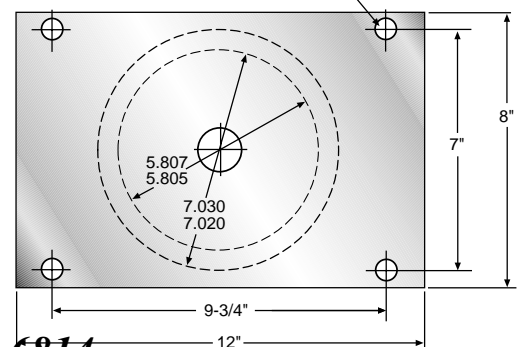
MOLD-ON POLYURETHANE

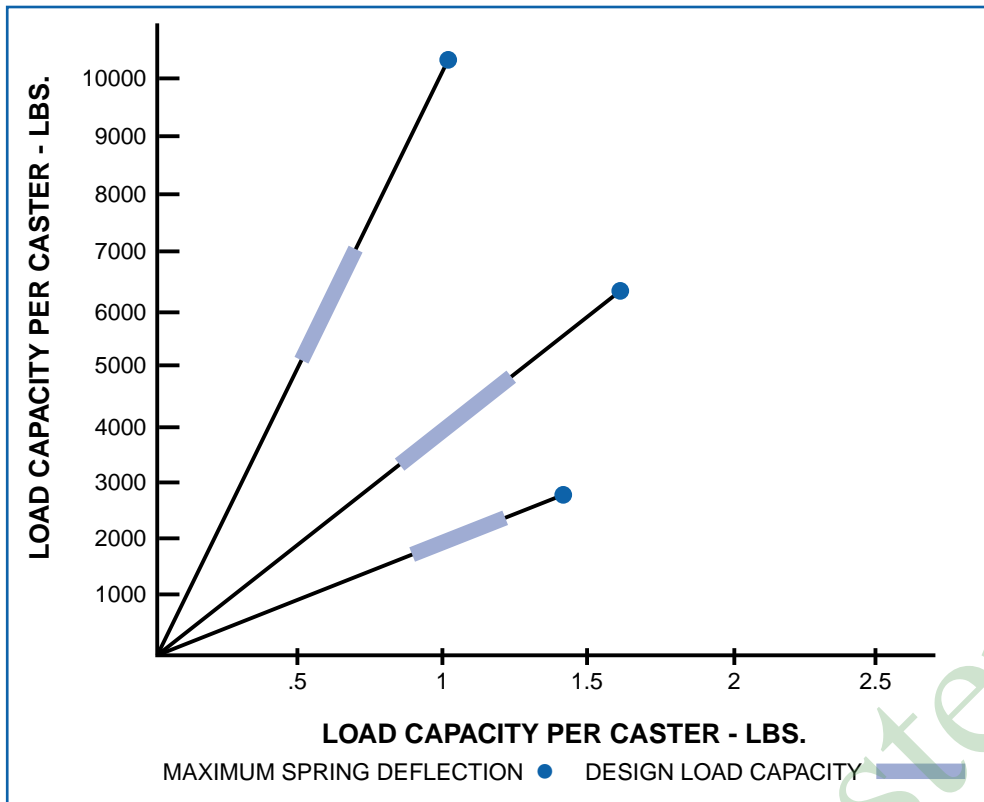
PAGE 128



TOP PLATE

21/32" Holes for 5/8" Bolts (4x)

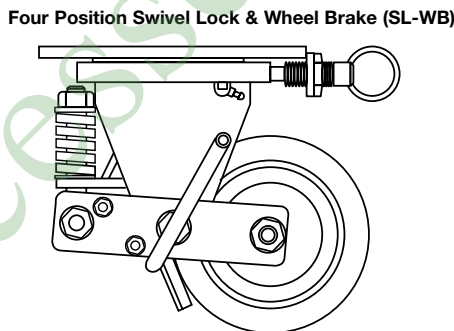
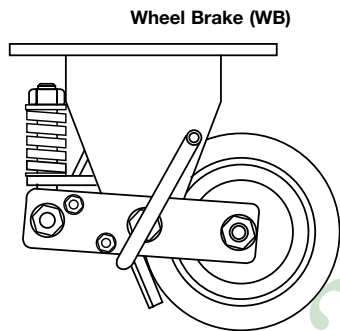




Extra-Heavy
Duty Shock
Absorbing



BRAKES



Wheel Brake

Operates by a foot pedal lever that has a rubber brake pad to form a positive brake action when the brake lever is pressed down to engage. To restore back to the normal position, simply reverse the action to disengage the brake. Easy to operate and trouble free.

Four Position Swivel Lock and Wheel Brake

A horizontal four position swivel lock with a spring-loaded plunger to securely hold the swivel in the slotted position desired. Plunger can be put into a neutral position for free swiveling action.

| Diameter | Tread Width | Load Capacity | Wheel Material | Bearing | Swivel Part Number | Rigid Part Number | Approx. Weight | Overall Height | Swivel Radius |
|----------|-------------|---------------|------------------------------|----------------|--------------------|--------------------|----------------|----------------|---------------|
| 10 | 5 | 6000 | POLYURETHANE / CAST IRON HUB | TAPERED ROLLER | 5110-YADI-M-CI-6 | 5110-YRADI-M-CI-6 | 127 | 15-3/4 | 8-3/4 |
| | | 7000 | | | 5110-YADI-M-CI-7 | 5110-YRADI-M-CI-7 | | | |
| | | 8000 | | | 5110-YADI-M-CI-8 | 5110-YRADI-M-CI-8 | | | |
| | | 9000 | | | 5110-YADI-M-CI-9 | 5110-YRADI-M-CI-9 | | | |
| | | 10,000 | | | 5110-YADI-M-CI-10 | 5110-YRADI-M-CI-10 | | | |