

87 SERIES EXTRA HEAVY DUTY

5,000 ^{lbs} maximum capacity



Item Shown: 87-08302-43-1

FEATURES

Swivel Section: Sealed precision ball bearing with hardened raceways and neoprene seals.

Legs: 3/8" x 3" steel, formed and continuously welded on the inside and outside to the yoke base.

Kingpin: 1" Alloy Steel Kingpin.

Axle: 1" Diameter Axle.

Lubrication: Sealed ball bearing is lubricated and requires zero maintenance.

Wheels: 6" to 12" diameter wheels with widths from 2-1/2" to 4".

Finish: Gold dichromate plating.

BENEFITS

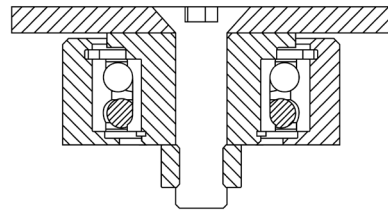
The 87 Series is maintenance free with its sealed precision ball bearing in the swivel section and in the wheels. The smooth rotation and extended lead help lower ergonomic forces.

APPLICATIONS

Suitable for power drawn applications, Automated Guided Vehicles (AGVs), aircraft wing and spar tooling, material carts, chassis rack carts, and aircraft maintenance stands.

Top Plate Size	Bolt Hole Spacing	Bolt Diameter
Std: 6.0 x 7.5	4.5 x 6.0	0.5

87 Series Cross Sectional View



OPTIONS

Brakes:

Poly Lock: P*
Face Contact: F

Swivel Locks:

Factory Installed: L
Demountable: DL

Toe Guard: TG

*For wheels with diameter >6

Contact the factory for special overall heights and finishes.

DUAL WHEEL DESIGN AVAILABLE

WHEEL			CAPACITY			PART NUMBER		
Dia.	Width	Material	Precision Ball	OAH	Swivel Lead	Precision Ball	Swivel Radius	Wt.
6	3.00	T/R Polyurethane	1640	9.50	3.00	87-06302-61-1	5.64	37.00
6	3.00	T/R-95 Polyurethane	2070	9.50	3.00	87-06302-91-1	5.70	37.00
6	3.00	HPPT Polyurethane	2300	9.50	3.00	87-06302-90-1	5.70	37.00
6	3.00	T/R Polyurethane	1640	9.50	3.00	87-06302-93-1	5.70	37.00
6	3.00	T/R-95 Polyurethane	2070	9.50	3.00	87-06302-94-1	5.70	37.00
8	3.00	T/R Polyurethane	2000	11.50	3.00	87-08302-61-1	6.67	45.00
8	3.00	T/R-95 Polyurethane	2800	11.50	3.00	87-08302-91-1	6.67	45.00
8	3.00	HPPT Polyurethane	3100	11.50	3.00	87-08302-90-1	6.67	45.00
8	3.00	T/R Polyurethane	2000	11.50	3.00	87-08302-93-1	6.67	45.00
8	3.00	T/R-95 Polyurethane	2800	11.50	3.00	87-08302-94-1	6.67	45.00
10	3.00	T/R Polyurethane	2400	13.50	3.00	87-10302-61-1	7.65	55.00
10	3.00	T/R-95 Polyurethane	3100	13.50	3.00	87-10302-91-1	7.65	55.00
10	3.00	HPPT Polyurethane	3450	13.50	3.00	87-10302-90-1	7.65	55.00
10	3.00	T/R Polyurethane	2400	13.50	3.00	87-10302-93-1	7.65	55.00
10	3.00	T/R-95 Polyurethane	3100	13.50	3.00	87-10302-94-1	7.65	55.00
12	3.00	T/R Polyurethane	2800	15.75	3.00	87-12302-61-1	8.63	57.00
12	3.00	T/R-95 Polyurethane	3400	15.75	3.00	87-12302-91-1	8.63	57.00
12	3.00	HPPT Polyurethane	3800	15.75	3.00	87-12302-90-1	8.63	57.00
12	3.00	T/R Polyurethane	2800	15.75	3.00	87-12302-93-1	8.63	57.00
12	3.00	T/R-95 Polyurethane	3400	15.75	3.00	87-12302-94-1	8.73	57.00

Capacity listed is for manual operation. For powered operations, consult factory.

Part Numbers listed are for the swivel casters. For rigid casters, change series to 80 and change the last digit from 1 to 2 (i.e. 80-12409-70-2)

Estimated weight is for swivel caster. Deduct 20 percent of swivel caster weight for rigid casters.

All dimensions are in inches. All weights are in pounds.

www.accesscasters.com