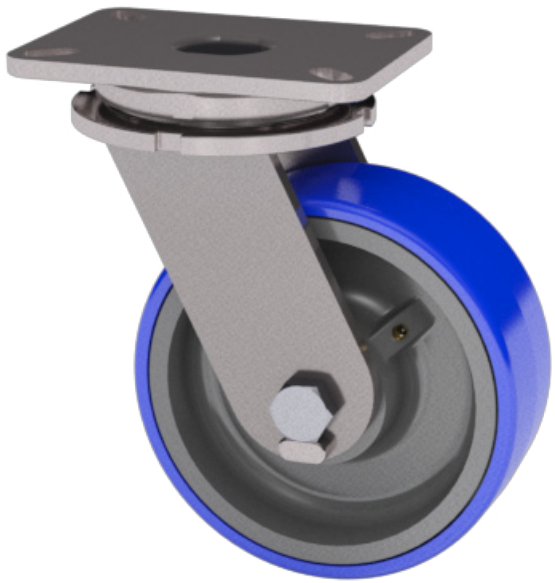


70 SERIES HEAVY DUTY

3,500^{LB} maximum capacity



Item Shown: 70-08309-80-1

FEATURES

Swivel Section: Made from hot forged C-1045 steel with 4" diameter load raceway and 1/2" diameter ball bearings.

Legs: 3/8" x 3" steel, continuously welded inside and outside to the yoke base.

Kingpin: 1" diameter, Grade 5 kingbolt is heat treated and features a slotted adjusting nut.

Axle: 3/4" diameter.

Lubrication: Pre-lubricated before shipping.

Wheels: 2-1/2" to 3" wide wheels. Roller bearings rotate on hardened and ground 1" steel spanner bushing.

Finish: Clear zinc plating.

Standard: Notched yoke base for field installation of swivel locks.

BENEFITS

The 70 Series is one of the most popular industrial caster designs. The hot forged swivel sections and industrial width wheels are well suited for many in-plant applications. The added strength of the kingbolt provides extended caster service life.

Sealed Wheels: SW

Toe Guard: TG

Heat Treated Raceways: HT

**For wheels with diameter >6*

Top Plate Size	Bolt Hole Spacing	Bolt Diameter
Std: 5.25 x 7.25 x 0.38	3.375 x 5.25 Slotted to 4.125 x 6.125	0.5

Note: Rigid top plate size is 5.0 x 7.25 x .375.

OPTIONS

Brakes:

Poly Lock: P*
 Wrap Around: W*
 Face Contact: F
 Single Side: SS
 Dual Side: DS

Swivel Locks:

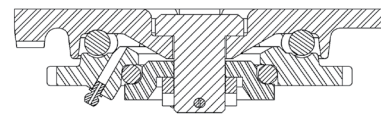
Factory Installed: L
 Demountable: DL

Sealed Swivel: SSW

APPLICATIONS

Suitable for medium heavy duty power drawn equipment, as well as heavier duty manually handled equipment, including gantry cranes, work platforms, dragline trucks, warehouse trucks, modular home manufacturing, production racks and fixtures, high capacity die tables, machinery dollies, corrugated steel box trucks, heavy portable storage racks, green tire racks, scrap hoppers and other equipment.

70 Series Cross Sectional View



WHEEL			CAPACITY				PART NUMBER			
Dia.	Width	Material	Roller Bearing	Tapered	OAH	Swivel Lead	Straight Roller	Precision Tapered	Swivel Radius	Wt.
4	3.00	Cast Iron	2,000		6.00	2.00	<u>70-04301-10-1</u>		4.27	20.00
4	3.25	Standard Polyurethane	1,200		6.00	2.00	<u>70-04321-60-1</u>		4.32	17.00
4	4.00	Cast Iron	3,500		6.00	2.00	<u>70-04401-10-1</u>		4.47	27.00
4	4.25	Standard Polyurethane	1,600		6.00	2.00	<u>70-04401-60-1</u>		4.53	25.00
4	4.25	Hard Polyurethane (70D)	2,000	2,000	6.00	2.00	<u>70-04401-63-1</u>	70-04409-63-1	4.53	25.00
5	2.50	Cast Iron	2,000	2,000	7.00	2.50	<u>70-05251-10-1</u>	70-05259-10-1	5.15	24.00
5	3.00	Standard Polyurethane	1,550	1,550	7.00	2.50	<u>70-05301-60-1</u>	70-05309-60-1	5.22	23.00
6	2.50	Cast Iron	2,500	2,500	8.00	2.50	<u>70-06251-10-1</u>	70-06259-10-1	5.64	27.00
6	2.50	Forged Steel	3,500	3,500	8.00	2.50	<u>70-06251-20-1</u>	70-06259-20-1	5.64	25.00
6	3.00	Cast Iron	2,500	2,500	8.00	2.50	<u>70-06301-10-1</u>	70-06309-10-1	5.70	25.00
6	3.00	Phenolic Resin	2,000	2,000	8.00	2.50	<u>70-06301-30-1</u>	70-06309-30-1	5.70	19.00
6	3.00	Standard Polyurethane	2,050	2,050	8.00	2.50	<u>70-06301-60-1</u>	70-06309-60-1	5.70	21.00
6	3.00	T/R Polyurethane	1,640		8.00	2.50		70-06302-61-1*	5.70	21.00
6	3.00	H.D. Standard Polyurethane	2,450	2,450	8.00	2.50	<u>70-06301-65-1</u>	70-06309-65-1	5.70	23.00
6	3.00	H.D. T/R Polyurethane	1,640	1,640	8.00	2.50	<u>70-06301-66-1</u>	70-06309-66-1	5.70	23.00
6	3.00	Mold On Rubber	675	675	8.00	2.50	<u>70-06301-70-1</u>	70-06309-70-1	5.70	24.00
6	4.00	H.D. Standard Polyurethane	3,000	3,000	8.00	2.50	<u>70-06401-65-1</u>	70-06409-65-1	5.85	34.00
8	3.00	Cast Iron	3,500	3,500	10.50	2.50	<u>70-08301-10-1</u>	70-08309-10-1	6.67	34.00
8	3.00	Forged Steel	3,500	3,500	10.50	2.50	<u>70-08301-20-1</u>	70-08309-20-1	6.67	34.00
8	3.00	Phenolic Resin	2,500	2,500	10.50	2.50	<u>70-08301-30-1</u>	70-08309-30-1	6.67	22.00
8	3.00	Standard Polyurethane	2,500	2,500	10.50	2.50	<u>70-08301-60-1</u>	70-08309-60-1	6.67	30.00
8	3.00	T/R Polyurethane	2,000		10.50	2.50		70-08302-61-1*	6.67	30.00
8	3.00	H.D. Standard Polyurethane	3,100	3,100	10.50	2.50	<u>70-08301-65-1</u>	70-08309-65-1	6.67	34.00
8	3.00	H.D. T/R Polyurethane	2,500	2,500	10.50	2.50	<u>70-08301-66-1</u>	70-08309-66-1	6.67	34.00
8	3.00	Mold On Rubber	850	850	10.50	2.50	<u>70-08301-70-1</u>	70-08309-70-1	6.67	27.00
10	3.00	Cast Iron	3,500	3,500	12.50	2.50	<u>70-10301-10-1</u>	70-10309-10-1	7.65	40.00
10	3.00	Forged Steel	3,500	3,500	12.50	2.50	<u>70-10301-20-1</u>	70-10309-20-1	7.65	43.00
10	3.00	Phenolic Resin	2,900	2,900	12.50	2.50	<u>70-10301-30-1</u>	70-10309-30-1	7.65	25.00
10	3.00	Standard Polyurethane	3,000	3,000	12.50	2.50	<u>70-10301-60-1</u>	70-10309-60-1	7.65	35.00
10	3.00	T/R Polyurethane	2,400		12.50	2.50		70-10302-61-1*	7.65	35.00
10	3.00	H.D. Standard Polyurethane	3,500	3,500	12.50	2.50	<u>70-10301-65-1</u>	70-10309-65-1	7.65	40.00
10	3.00	H.D. T/R Polyurethane	2,750	2,750	12.50	2.50	<u>70-10301-66-1</u>	70-10309-66-1	7.65	40.00
10	3.00	Mold On Rubber	1,000	1,000	12.50	2.50	<u>70-10301-70-1</u>	70-10309-70-1	7.65	30.00
10	4.00	Standard Polyurethane	3,500	3,500	12.50	2.50	<u>70-10401-60-1</u>	70-10409-60-1	7.76	45.00
10	4.00	Mold On Rubber	1,400	1,400	12.50	2.50	<u>70-10401-70-1</u>	70-10409-70-1	7.76	44.00
12	3.00	Ductile Iron	3,500	3,500	15.50	2.50	<u>70-12301-12-1</u>	70-12309-12-1	8.63	55.00
12	3.00	Phenolic Resin	3,500	3,500	15.50	2.50	<u>70-12301-30-1</u>	70-12309-30-1	8.63	30.00
12	3.00	Standard Polyurethane	3,500	3,500	15.50	2.50	<u>70-12301-60-1</u>	70-12309-60-1	8.63	45.00
12	3.00	Mold On Rubber	1,125	1,125	15.50	2.50	<u>70-12301-70-1</u>	70-12309-70-1	8.63	42.00
12	4.00	Mold On Rubber	1,600	1,600	15.50	2.50	<u>70-12401-70-1</u>	70-12409-70-1	8.73	56.00

*These casters have precision ball bearings.

Capacity listed is for manual operation. For powered operations, consult factory.

Part Numbers listed are for the swivel casters. For rigid casters, change the last digit from 1 to 2 (i.e. 70-10309-70-2)

Estimated weight is for swivel caster. Deduct 20 percent of swivel caster weight for rigid casters.

All dimensions are in inches. All weights are in pounds.