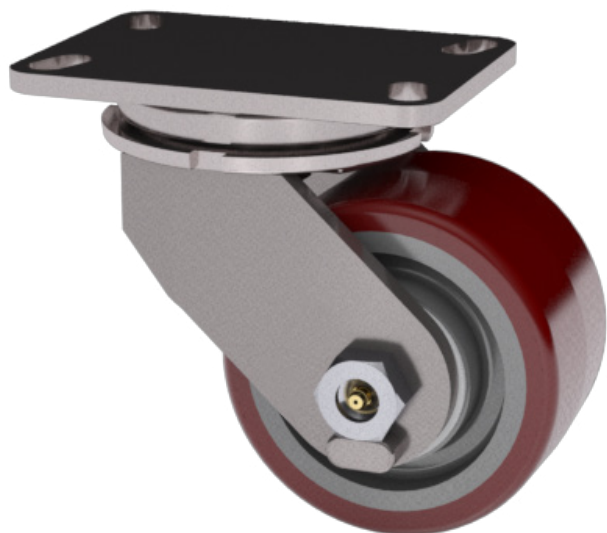


65 SERIES HEAVY DUTY

2,000 lbs maximum capacity



Item Shown: 65-06301-60-1

FEATURES

Swivel Section: Hot forged SAE 1045 steel swivel section features a fully machined 3-1/4" diameter raceway which is concentric to the kingpin. The yoke base is notched for field installation of swivel locks.

Legs: 3/8" x 2-1/2" legs are formed and continuously welded inside and outside to the yoke base

Kingpin: The 3/4" heavy section kingpin is machined out of stock which was integrally forged into the top plate.

Axle: 3/4" diameter axle

Lubrication: Pre-lubricated before shipping.

Wheels: 4" to 12" diameter wheels have a 1" straight roller bearing. Roller bearing rotates on a hardened and ground 1" steel spanner bushing. Tapered bearings are 3/4" I.D.

Finish: Clear zinc plating.

Standard: Notched yoke base for field installation of swivel locks.

BENEFITS

The 65 Series hot forged swivel sections are the strongest in the market and will handle more abusive applications than the equivalent cold forged swivel sections. Each swivel top plate and yoke base is machined to a mirror smooth finish for a close tolerance fit for added strength. In addition, the integrally forged, heavy section kingpin provides extra durability and a precision fit and eliminates "kingpin stretch" which is common in riveted or nut and bolt design sections.

Sealed Swivel: SSW

Sealed Wheels: SW

Toe Guard: TG

Heat Treated Raceways: HT

Precision Tapered Thrust Bearings (68 Series)

Precision Tapered Load & Thrust Bearings (69 Series)

*For wheels with diameter >6

OPTIONS

Brakes:

- Poly Lock: P*
- Wrap Around: W*
- Face Contact: F
- Single Side: SS
- Dual Side: DS

Swivel Locks:

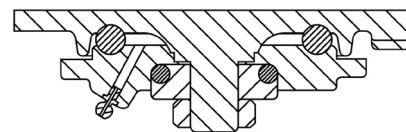
- Factory Installed: L
- Demountable: DL

APPLICATIONS

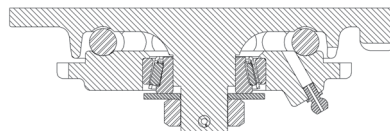
Ideal for heavy manually moved loads or for medium duty power drawn equipment, bakery dough troughs, tow line conveyors, heavy duty bakery racks, production dollies, automotive body dollies, gantry cranes, lift truck battery handling equipment, conveyor systems, and automated guided vehicles.

Top Plate Size	Bolt Hole Spacing	Bolt Diameter
Std: 4.5 x 6.25	2.43 x 4.9 Slotted to 3.37 x 5.25	0.5

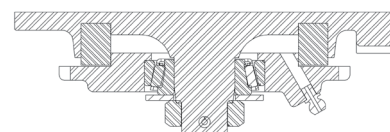
65 Series Cross Sectional View



68 Series Cross Sectional View (Optional)



69 Series Cross Sectional View (Optional)



WHEEL			CAPACITY				PART NUMBER			
Dia.	Width	Material	Roller Bearing	Tapered	OAH	Swivel Lead	Straight Roller	Precision Tapered	Swivel Radius	Wt.
4	3.00	Cast Iron	2,000	2,000	5.50	2.00	65-04301-10-1	65-04309-10-1	4.27	18.00
4	3.25	Standard Polyurethane	1,200	1,200	5.50	2.00	65-04321-60-1	65-04309-60-1	4.32	16.00
5	2.50	Cast Iron	2,000	2,000	6.50	2.25	65-05251-10-1	65-05259-10-1	4.91	20.00
5	2.50	Standard Polyurethane	1,325	1,325	6.50	2.25	65-05251-60-1	65-05259-60-1	4.91	20.00
5	3.00	Standard Polyurethane	1,550	1,550	6.50	2.25	65-05301-60-1	65-05309-60-1	4.98	22.00
6	2.50	Cast Iron	2,000	2,000	7.50	2.50	65-06251-10-1	65-06259-10-1	5.64	22.50
6	2.50	Forged Steel	2,000	2,000	7.50	2.50	65-06251-20-1	65-06259-20-1	5.64	22.00
6	2.50	Phenolic Resin	1,600	1,600	7.50	2.50	65-06251-30-1	65-06259-30-1	5.64	14.50
6	2.50	Standard Polyurethane	1,625	1,625	7.50	2.50	65-06251-60-1	65-06259-60-1	5.64	26.00
6	2.50	Mold On Rubber	550	550	7.50	2.50	65-06251-70-1	65-06259-70-1	5.64	24.00
6	3.00	Cast Iron	2,000	2,000	7.50	2.50	65-06301-10-1	65-06309-10-1	5.70	23.00
6	3.00	Phenolic Resin	2,000	2,000	7.50	2.50	65-06301-30-1	65-06309-30-1	5.70	17.00
6	3.00	Standard Polyurethane	2,000	2,000	7.50	2.50	65-06301-60-1	65-06309-60-1	5.70	15.00
6	3.00	H.D. Standard Polyurethane	2,000	2,000	7.50	2.50	65-06301-65-1	65-06309-65-1	5.70	14.50
6	3.00	T/R Polyurethane		1,640	7.50	2.50		65-06302-61-1*	5.70	14.50
6	3.00	Mold On Rubber	675	675	7.50	2.50	65-06301-70-1	65-06309-70-1	5.70	23.00
8	2.50	Phenolic Resin	2,000	2,000	10.12	2.25	65-08251-30-1	65-08259-30-1	6.37	17.00
8	2.50	Standard Polyurethane	2,000	2,000	10.12	2.25	65-08251-60-1	65-08259-60-1	6.37	23.00
8	2.50	H.D. T/R Polyurethane	1,640	1,640	10.12	2.25	65-08251-66-1	65-08259-66-1	6.37	25.00
8	2.50	Mold On Rubber	670	670	10.12	2.25	65-08251-70-1	65-08259-70-1	6.37	19.00
8	3.00	Cast Iron	2,000	2,000	10.12	2.25	65-08301-10-1	65-08309-10-1	6.43	39.00
8	3.00	Forged Steel	2,000	2,000	10.12	2.25	65-08301-20-1	65-08309-20-1	6.43	29.00
8	3.00	Phenolic Resin	2,000	2,000	10.12	2.25	65-08301-30-1	65-08309-30-1	6.43	19.00
8	3.00	Laminated Phenolic	2,000	2,000	10.12	2.25	65-08301-35-1	65-08309-35-1	6.43	19.00
8	3.00	Standard Polyurethane	2,000	2,000	10.12	2.25	65-08301-60-1	65-08309-60-1	6.43	27.00
8	3.00	T/R Polyurethane		2,000	10.12	2.25		65-08302-61-1*	6.43	27.00
8	3.00	H.D. Standard Polyurethane	2,000	2,000	10.12	2.25	65-08301-65-1	65-08309-65-1	6.43	25.00
8	3.00	H.D. T/R Polyurethane	2,000	2,000	10.12	2.25	65-08301-66-1	65-08309-66-1	6.43	25.00
8	3.00	Mold On Rubber	840	840	10.12	2.25	65-08301-70-1	65-08309-70-1	6.43	24.00
10	2.50	Mold On Rubber	790	790	11.50	2.50	65-10251-70-1	65-10259-70-1	7.60	26.00
10	3.00	Cast Iron	2,000	2,000	11.50	2.50	65-10301-10-1	65-10309-10-1	7.65	30.00
10	3.00	Phenolic Resin	2,000	2,000	11.50	2.50	65-10301-30-1	65-10309-30-1	7.65	21.00
10	3.00	Standard Polyurethane	2,000	2,000	11.50	2.50	65-10301-60-1	65-10309-60-1	7.65	32.00
10	3.00	T/R Polyurethane		2,000	11.50	2.50		65-10302-61-1*	7.65	32.00
10	3.00	H.D. Standard Polyurethane	2,000	2,000	11.50	2.50	65-10301-65-1	65-10309-65-1	7.65	37.00
10	3.00	H.D. T/R Polyurethane	2,000	2,000	11.50	2.50	65-10301-66-1	65-10309-66-1	7.65	37.00
10	3.00	Mold On Rubber	1,000	1,000	11.50	2.50	65-10301-70-1	65-10309-70-1	7.65	27.00
12	2.50	Standard Polyurethane	2,000	2,000	13.50	3.00	65-12251-60-1	65-12259-60-1	9.09	32.00
12	3.00	Phenolic Resin	2,000	2,000	13.50	3.00	65-12301-30-1	65-12309-30-1	9.12	30.00
12	3.00	Standard Polyurethane	2,000	2,000	13.50	3.00	65-12301-60-1	65-12309-60-1	9.12	41.00
12	3.00	Mold On Rubber	1,125	1,125	13.50	3.00	65-12301-70-1	65-12309-70-1	9.12	32.00

Capacity listed is for manual operation. For powered operations, consult factory.

Part Numbers listed are for the swivel caster. For rigid casters, change the last digit from 1 to 2 (i.e. 65-10309-70-2)

Estimated weight is for swivel caster. Deduct 20 percent of swivel caster weight for rigid casters.

*These casters have precision ball bearings. All dimensions are in inches. All weights are in pounds. Swivel Options: for the 68 or 69 series swivel configuration please change first two digits in the part number ie: 65-06309-60-1 to 69-06309-60-1.