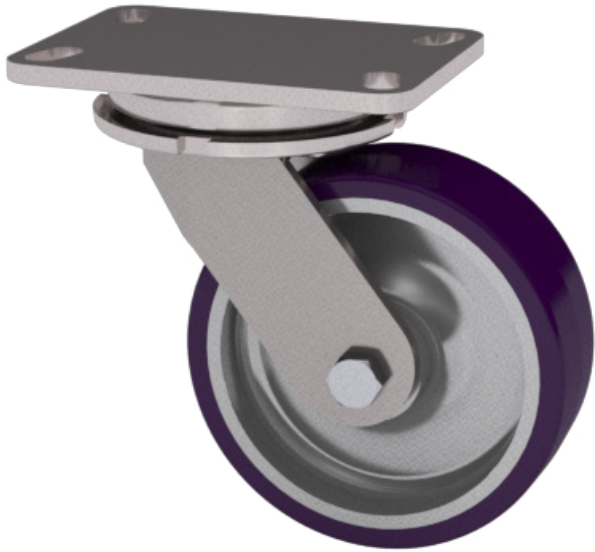


# 60 SERIES HEAVY DUTY

1,500 <sup>lbs</sup> maximum capacity



Item Shown: 60-06201-90-1

## FEATURES

**Swivel Section:** The hot forged, SAE 1045 steel swivel section features a precision machined 3-1/4" diameter load race with 7/16" ball bearings.

**Legs:** 1/4" x 2" steel, continuously welded inside and outside to the yoke base.

**Kingpin:** 3/4" integrally forged as part of the top plate with fully machined raceways and slotted adjusting nut.

**Axle:** 1/2" diameter.

**Lubrication:** Pre-lubricated before shipping.

**Wheels:** 4" to 8" wheels.

**Finish:** Clear zinc plating.

**Standard:** Notched yoke base for field installation of swivel locks.

## BENEFITS

The 60 Series hot forged casters are heavier and stronger than cold forged casters. Additionally, the precision machined raceways have longer wearing characteristics. Available with a wide variety of options, these heavy duty casters are excellent for in-plant equipment.

## OPTIONS

### Brakes:

- Cam: ..... C\*
- Poly Lock: ..... P\*
- Wrap Around: ..... W\*^
- Dual Side: ..... DS^
- Single Side: ..... SS^
- Face Contact: ..... F

### Swivel Locks:

- Factory Installed: ..... L
- Demountable: ..... DL

- Sealed Swivel: ..... SSW
- Sealed Wheels: ..... SW
- Toe Guard: ..... TG
- Heat Treated Raceways: ..... HT

Precision Tapered Thrust Bearings (68 Series)  
Precision Tapered Load & Thrust Bearings (69 Series)

\*For wheels with diameter >6

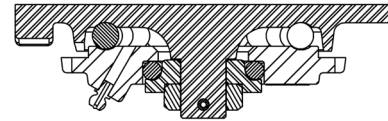
^Only available on roller bearing wheels.

## APPLICATIONS

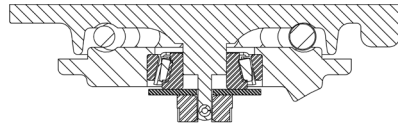
Excellent for parts bins, towline carts, dough troughs, automated vehicles, production racks and fixtures, pan trucks, conveyor systems and other heavy duty applications.

Top Plate Size	Bolt Hole Spacing	Bolt Diameter
Std: 4.5 x 6.25	2.433 x 4.933 Slotted to 3.37 x 5.25	0.5

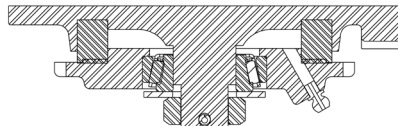
### 60 Series Cross Sectional View



### 68 Series Cross Sectional View (Optional)



### 69 Series Cross Sectional View (Optional)



WHEEL			CAPACITY				PART NUMBER			
Dia.	Width	Material	Roller Bearing	Precision Ball	OAH	Swivel Lead	Straight Roller	Precision Ball	Swivel Radius	Wt.
4	1.50	Forged Steel	1,400	1,400	5.62	1.50	60-04101-20-1	60-04109-20-1†	3.58	7.25
4	2.00	Phenolic Resin	800		5.62	1.50	60-04201-30-1		3.64	7.50
4	2.00	Cast Iron	1,000		5.62	1.50	60-04201-10-1		3.64	7.50
4	2.00	Standard Polyurethane	700	700	5.62	1.50	60-04201-60-1	60-04204-60-1*	3.64	7.50
4	2.00	H.D. T/R Polyurethane	600	600	5.62	1.50	60-04201-66-1	60-04202-66-1	3.64	7.50
4	2.00	Mold On Rubber	350		5.62	1.50	60-04201-70-1		3.64	8.20
5	2.00	Forged Steel	1,500	1,500	6.50	1.75	60-05201-20-1	60-05209-20-1†	4.37	10.20
5	2.00	Cast Iron	1,200		6.50	1.75	60-05201-10-1		4.37	9.20
5	2.00	Phenolic Resin	1,000		6.50	1.75	60-05201-30-1		4.37	8.50
5	2.00	Standard Polyurethane	1,050	1,050	6.50	1.75	60-05201-60-1	60-05202-60-1	4.37	10.00
5	2.00	T/R Polyurethane	850	850	6.50	1.75	60-05201-61-1	60-05202-61-1	4.37	10.00
5	2.00	Mold On Rubber	400		6.50	1.75	60-05201-70-1		4.37	10.00
6	2.00	Forged Steel	1,500	1,500	7.50	2.25	60-06201-20-1	60-06209-20-1†	5.34	13.50
6	2.00	Cast Iron	1,200		7.50	2.25	60-06201-10-1		5.34	13.00
6	2.00	Phenolic Resin	1,200		7.50	2.25	60-06201-30-1		5.34	9.50
6	2.00	Standard Polyurethane	1,200	1,200	7.50	2.25	60-06201-60-1	60-06202-60-1	5.34	12.00
6	2.00	T/R Polyurethane	1,000	1,000	7.50	2.25	60-06201-61-1	60-06202-61-1	5.34	12.00
6	2.00	Mold On Rubber	425		7.50	2.25	60-06201-70-1		5.34	12.00
8	2.00	Cast Iron	1,500		10.12	2.25	60-08201-10-1		6.33	16.50
8	2.00	Phenolic Resin	1,400		10.12	2.25	60-08201-30-1		6.33	12.00
8	2.00	Standard Polyurethane	1,500	1,500	10.12	2.25	60-08201-60-1	60-08202-60-1	6.33	14.00
8	2.00	T/R Polyurethane	1,200	1,200	10.12	2.25	60-08201-61-1	60-08202-61-1	6.33	14.00
8	2.00	Mold On Rubber	500		10.12	2.25	60-08201-70-1		6.33	14.00

Capacity listed for manual operation. For powered operations consult factory.  
 Part numbers listed are for the swivel caster. For rigid casters, change the last digit from 1 to 2 (ie: 60-06201-60-2)  
 Estimated weight is for the swivel caster, deduct 20% of swivel caster weight for rigid caster.  
 † This caster has tapered bearings.  
 \* This caster has annular ball bearings  
 All dimensions are in inches. All weights are in pounds.