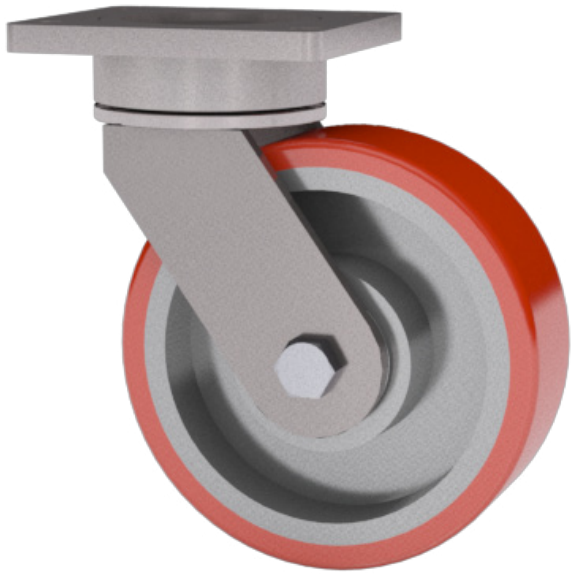


# 55 SERIES KINGPINLESS STYLE

1,000 LBS maximum capacity



Item Shown: 55-6002002-91-12

## FEATURES

**Swivel Section:** Sealed precision ball bearing with hardened raceways and neoprene seals.

**Legs:** 1/4" x 2" steel, formed and continuously welded on the inside and outside of the yoke base.

**Kingpin:** Kingpinless style design.

**Axle:** 1/2" diameter.

**Lubrication:** Sealed ball bearing is lubricated and requires zero maintenance.

**Wheels:** 4" to 8" diameter wheels are available with sealed precision ball bearings.

**Finish:** Clear zinc plating.

## BENEFITS

The 55 Series is maintenance free with its sealed precision ball bearing in the swivel section and in the wheels. The smooth rotation and extended lead help lower ergonomic forces.

## APPLICATIONS

Excellent for production racks and fixtures, parts bins, conveyer systems, and other applications where maintenance free casters and ergonomics are concerns.

## OPTIONS

### Brakes:

Cam: ..... C\*  
 Poly Lock: ..... P\*  
 Face Contact: ..... F

### Swivel Locks:

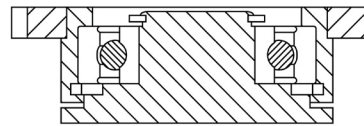
Factory Installed: ..... L  
 Demountable: ..... DL

Toe Guard: ..... TG

\*For wheels with diameter >6

Top Plate Size	Bolt Hole Spacing	Bolt Diameter
Std: 4.0 x 5.0	2.625 x 3.625 Slotted to 3.0 x 3.0	0.375

### 55 Series Cross Sectional View



WHEEL			CAPACITY			PART NUMBER		
Dia.	Width	Material	Precision Ball	OAH	Swivel Lead	Precision Ball	Swivel Radius	Wt.
4	2.00	T/R Polyurethane	600	5.63	2.00	<u>55-04204-61-1*</u>	4.12	7.50
4	2.00	T/R-95 Polyurethane	1,000	5.63	2.00	<u>55-04204-91-1*</u>	4.12	7.50
4	2.00	HPPT Polyurethane	1,000	5.63	2.00	<u>55-04204-90-1*</u>	4.12	7.50
5	2.00	T/R Polyurethane	840	6.50	2.00	<u>55-05202-61-1</u>	4.61	10.00
5	2.00	T/R-95 Polyurethane	1,000	6.50	2.00	<u>55-05202-91-1</u>	4.61	10.00
5	2.00	HPPT Polyurethane	1,000	6.50	2.00	<u>55-05202-90-1</u>	4.61	10.00
6	2.00	T/R Polyurethane	960	7.50	2.00	<u>55-06202-61-1</u>	5.10	12.00
6	2.00	T/R-95 Polyurethane	1,000	7.50	2.00	<u>55-06202-91-1</u>	5.10	12.00
6	2.00	HPPT Polyurethane	1,000	7.50	2.00	<u>55-06202-90-1</u>	5.10	12.00
8	2.00	T/R Polyurethane	1,000	10.13	2.00	<u>55-08202-61-1</u>	6.08	16.00
8	2.00	T/R-95 Polyurethane	1,000	10.13	2.00	<u>55-08202-91-1</u>	6.08	16.00
8	2.00	HPPT Polyurethane	1,000	10.13	2.00	<u>55-08202-90-1</u>	6.08	16.00

Capacity listed is for manual operation. For powered operations, consult factory.  
 Part Numbers listed are for the swivel caster. For rigid casters, change series to 50 and change the last digit from 1 to 2 (i.e. 50-08202-61-2).  
 Estimated weight is for swivel caster. Deduct 20 percent of swivel caster weight for rigid casters.  
 \* This caster has annular ball bearings  
 All dimensions are in inches. All weights are in pounds.

# IF YOU DON'T SEE IT...ASK US



## If You Don't See It....Ask Us

In addition to the standard casters and wheels found in this catalog, Caster Concepts also provides:

- Lift truck stabilizer casters
- Turntable casters
- Press-on polyurethane wheels
- Aluminum core wheels

Other specialized solutions