

## POHI, POH Series

Heat-Resistant, Thermoplastic Blickle TempLine® Wheels

440 - 1,320 lbs    -20° F - +480° F    ✓RoHS

Tread & tire hardness	85° shore D
Temperature resistance	-15° F - +480° F
Rolling resistance	excellent
Operating noise	reasonable
Floor pressure	reasonable

**POHI / POH-wheel series:**  
Made of high-quality, impact and heat-resistant nylon, 85° shore D hardness, very low rolling and swivel resistance, smooth running performance on even floors, high abrasion resistance, color gray (POHI series) and natural color (POH series).  
**Bearing type:**  
• Plain bore, corrosion-resistant  
**Other features:**  
High chemical resistance to many aggressive substances.

**Operating temperature:**  
**POHI series: -15° F to +480° F.**  
Furnace temperatures above +570° F can be tolerated intermittently, but the temperature at the wheel must not exceed +480° F.  
**POH series: -15° F to +340° F.**  
Furnace temperatures above +430° F can be tolerated intermittently, but the temperature at the wheel must not exceed +340° F.

Suitable for autoclaves.

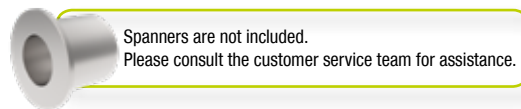


POHI Series

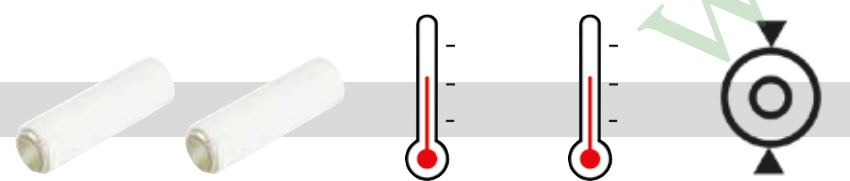
POH Series



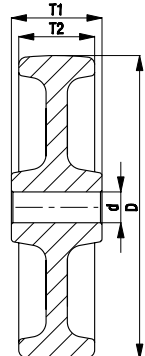
Wheels	Wheel Ø (D)	Wheel Width (T2)	Load Cap. up to +160° F	Load Cap. at +340° F	Load Cap. at +480° F	Bearing Type	Axle Bore Ø (d)	Hub Length (T1)
	[inch] [mm]	[inch] [mm]	[lbs] [kg]	[lbs] [kg]	[lbs] [kg]		[mm]	[inch] [mm]
<b>POHI Series (up to 480° F)</b>								
POHI 100/12-35G	4 [100]	1 1/8 [30]	440 [200]	350 [160]	265 [120]	Plain bore	12	1 3/8 [35]
POHI 100/12-45G	4 [100]	1 1/8 [30]	440 [200]	350 [160]	265 [120]	Plain bore	12	1 3/4 [45]
POHI 125/12-35G	5 [125]	1 1/8 [30]	550 [250]	440 [200]	330 [150]	Plain bore	12	1 3/8 [35]
POHI 125/12G	5 [125]	1 1/8 [30]	660 [300]	530 [240]	400 [180]	Plain bore	12	1 3/4 [45]
POHI 150/20G	6 [150]	2 [50]	1100 [500]	880 [400]	660 [300]	Plain bore	20	2 1/2 [60]
POHI 200/20G	8 [200]	2 [50]	1320 [600]	1055 [480]	800 [360]	Plain bore	20	2 1/2 [60]
<b>POH Series (up to 340° F)</b>								
POH 100/12-35G	4 [100]	1 1/8 [30]	440 [200]	350 [160]		Plain bore	12	1 3/8 [35]
POH 100/12-45G	4 [100]	1 1/8 [30]	440 [200]	350 [160]		Plain bore	12	1 3/4 [45]
POH 125/12-35G	5 [125]	1 1/8 [30]	550 [250]	440 [200]		Plain bore	12	1 3/8 [35]
POH 125/12G	5 [125]	1 1/8 [30]	660 [300]	530 [240]		Plain bore	12	1 3/4 [45]



Options



	Teflon-Coated Stainless Steel Bushing Ø 12/8x37 mm	Teflon-Coated Stainless Steel Bushing Ø 12/8x47 mm	With Heat-Resistant Ball Bearings	With Stainless Steel Ball Bearing and Heat-Resistant Grease	Further Dimensions up to 1,320 lbs
Product Code	XAT 12x37	XAT 12x47	-HK	-HXX	
Available for	Consult factory	Consult factory	Consult factory	Consult factory	Consult factory

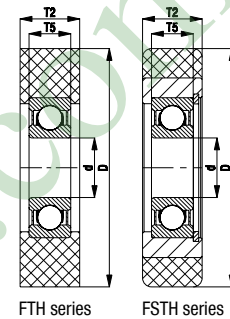


## FTH, FSTH Series

Guide Rollers with Blickle Extrathane® Polyurethane Tread

45 - 600 lbs    ✓RoHS

Tread & tire hardness	92° shore A
Temperature resistance	-15° F - +160° F intermittently up to +195° F
Rolling resistance	very good
Operating noise	good
Floor pressure	good



FTH series

FSTH series



FTH Series

FSTH Series



**FTH / FSTH-guide roller series:**  
**Tread:** Made of high-quality, reaction-cast polyurethane-elastomer Blickle Extrathane®, 92° shore A hardness, low-noise operation, low rolling resistance, good floor preservation, high abrasion resistance, high cut and tear propagation resistance, color light brown, non-marking, non-staining. Cast tread.  
**Wheel center:**  
**FTH series:** Tread directly bonded onto the ball bearing, very good chemical connection.  
**FSTH series:** Made of steel.

**Bearing type:**  
• Ball bearing, sealed, lubricated with long-life grease

**Other features:**  
High chemical resistance to many aggressive substances.  
Operating temperature: -15° F to +160° F, intermittently up to +195° F.  
At ambient temperatures above +105° F the load capacity is reduced.  
The load capacities indicated refer to applications without obstacles.  
Maintenance-free under standard conditions.

Guide Rollers	Wheel Ø (D)	Wheel Width (T2)	Load Capacity	Ball Bearing	Axle Bore Ø (d)	Clamping Length (T5)
	[inch] [mm]	[inch] [mm]	[lbs] [kg]		[mm]	[inch] [mm]
<b>FTH Series</b>						
FTH 30x8/6-6K	1 1/8 [30]	3/8 [8]	45 [20]	626 2RS	6	7/32 [6]
FTH 30x11/9-7K	1 1/8 [30]	13/32 [11]	66 [30]	609 2RS	9	1/4 [7]
FTH 34x16/8-7K	1 3/8 [34]	3/8 [16]	66 [30]	608 2RS	8	1/4 [7]
FTH 35x14/12-8K	1 3/8 [35]	11/32 [14]	88 [40]	6001 2RS	12	5/16 [8]
FTH 36x13/10-9K	1 3/8 [36]	1/2 [13]	88 [40]	6200 2RS	10	11/32 [9]
FTH 40x15/10-8K	1 1/2 [40]	9/16 [15]	88 [40]	6000 2RS	10	5/16 [8]
FTH 40x20/10-9K	1 1/2 [40]	23/32 [20]	110 [50]	6200 2RS	10	11/32 [9]
FTH 45x17/15-11K	1 3/4 [45]	3/8 [17]	155 [70]	6202 2RS	15	13/32 [11]
FTH 50x15/10-9K	2 [50]	9/16 [15]	130 [60]	6200 2RS	10	11/32 [9]
FTH 50x15/12-12K	2 [50]	9/16 [15]	155 [70]	6301 2RS	12	13/32 [12]
FTH 50x18/15-11K	2 [50]	11/16 [18]	155 [70]	6202 2RS	15	13/32 [11]
FTH 60x20/17-12K	2 1/2 [60]	23/32 [20]	200 [90]	6203 2RS	17	15/32 [12]
FTH 70x20/25-15K	2 3/4 [70]	23/32 [20]	275 [125]	6205 2RS	25	9/16 [15]
<b>FSTH Series</b>						
FSTH 40x13/10-8K	1 1/2 [40]	1/2 [13]	100 [45]	6000 2RS	10	5/16 [8]
FSTH 40x15/10-8K	1 1/2 [40]	9/16 [15]	120 [55]	6000 2RS	10	5/16 [8]
FSTH 40x20/10-8K	1 1/2 [40]	23/32 [20]	155 [70]	6000 2RS	10	5/16 [8]
FSTH 40x25/10-8K	1 1/2 [40]	1 [25]	200 [90]	6000 2RS	10	5/16 [8]
FSTH 50x15/10-8K	2 [50]	9/16 [15]	145 [65]	6000 2RS	10	5/16 [8]
FSTH 50x18/17-10K	2 [50]	11/16 [18]	175 [80]	6003 2RS	17	23/64 [10]
FSTH 50x25/12-10K	2 [50]	1 [25]	245 [110]	6201 2RS	12	23/64 [10]
FSTH 60x20/15-13K	2 1/2 [60]	23/32 [20]	230 [105]	6302 2RS	15	1/2 [13]
FSTH 60x20/20-12K	2 1/2 [60]	23/32 [20]	230 [105]	6004 2RS	20	19/32 [12]
FSTH 60x25/20-12K	2 1/2 [60]	1 [25]	285 [130]	6004 2RS	20	19/32 [12]
FSTH 70x25/20-15K	2 3/4 [70]	1 [25]	340 [155]	6304 2RS	20	5/16 [15]
FSTH 70x25/25-15K	2 3/4 [70]	1 [25]	340 [155]	6205 2RS	25	9/16 [15]
FSTH 80x25/25-15K	3 1/8 [80]	1 [25]	395 [180]	6205 2RS	25	9/16 [15]
FSTH 90x25/25-15K	3 1/2 [90]	1 [25]	440 [200]	6205 2RS	25	9/16 [15]
FSTH 100x25/20-15K	4 [100]	1 [25]	485 [220]	6304 2RS	20	9/16 [15]
FSTH 100x25/25-15K	4 [100]	1 [25]	485 [220]	6205 2RS	25	9/16 [15]
FSTH 125x25/25-15K	5 [125]	1 [25]	600 [275]	6205 2RS	25	9/16 [15]



Options



	High Dynamic Version with Optimized Rolling Resistance	Hydrolysis Resistant Version	Antistatic Version	Other Tread Hardness	Wheel with Impact-Resistant Nylon Tread, 70° Shore D	With Stainless Steel Ball Bearing	Further Dimensions
Product Code Suffix		FPOB series	-AS	FPTH series	FPO series	-XK	
Available for	Consult factory	Consult factory	Consult factory	Consult factory	Consult factory	Consult factory	Consult factory