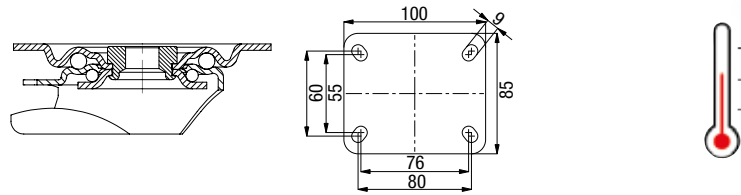


## LIX Series

Medium Duty Heat-Resistant Stainless Steel Industrial Top Plate Casters - Metric Standards

220 - 330 lbs    -15° F - +480° F    ✓RoHS



- POSI** Tread: Highly heat-resistant silicone rubber Blickle TempLine® Comfort, 75° shore A, black, **non-marking**. Vulcanized tire. Wheel center: Impact and heat-resistant, glass-filled nylon, gray. Bearing type: Plain bore with teflon-coated stainless steel spacers. For more information refer to page 93
- POHI** Wheel: High-quality, impact and heat-resistant, glass-filled nylon Blickle TempLine® Performance, 85° shore D, gray. Bearing type: Plain bore with teflon-coated stainless steel spacers. For more information refer to page 94

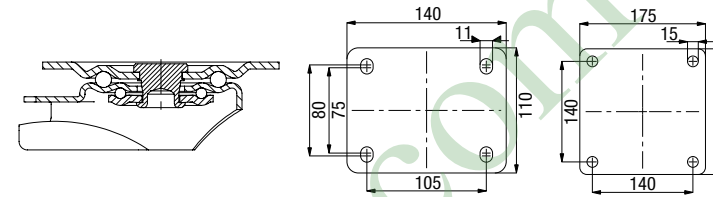
Blickle TempLine® Comfort

Blickle TempLine® Performance

## Castors with Pneumatic and Soft Solid Tires

Medium Duty Industrial Top Plate Casters - Metric Standards

165 - 1,000 lbs    ✓RoHS



- P** Tires: Pneumatic tires with ribbed or sawtooth profile, 2 or 4 ply rating, with tube, black. Rim: Pressed steel, with tubular steel hub, zinc-plated, blue-passivated, Cr6-free. Bearing type: Roller bearing. For more information refer to page 86

- VLE** Tires: 2-component tires with hard rubber core and super-elastic, abrasion-resistant tread, steel-wire reinforced, black, **puncture proof**. Rims: Heavy pressed steel, bolted (flat based rim), with tubular steel hub, zinc-plated, blue-passivated, Cr6-free. Bearing type: Ball bearing. For more information refer to page 87



Swivel Casters	Rigid Casters	Swivel Casters with 'Stop-Fix' Brake	Wheel Ø [inch] [mm]	Wheel Width [inch] [mm]	Load Capacity [lbs] [kg]	Bearing Type	Total Height [inch] [mm]	Plate Size [mm]	Bolt Hole Spacing [mm]	For Mounting Bolt [inch]	Swivel Lead [inch]
<b>LIX-POSI Series</b>											
LIX-POSI 100G-OF-XAT	BX-POSI 100G-XAT	LIX-POSI 100G-FI-OF-XAT	4 [100]	1 1/8 [40]	220 [100]	Plain bore	4 1/8 [125]	100 x 85	80 x 60	3/16	1 1/8
LIX-POSI 125G-OF-XAT	BX-POSI 125G-XAT	LIX-POSI 125G-FI-OF-XAT	5 [125]	1 1/8 [40]	265 [120]	Plain bore	5 7/8 [150]	100 x 85	80 x 60	3/16	1 1/8
<b>LIX-POHI Series</b>											
LIX-POHI 100G-OF-XAT	BX-POHI 100G-XAT	LIX-POHI 100G-FI-OF-XAT	4 [100]	1 1/8 [30]	330 [150]	Plain bore	4 1/8 [125]	100 x 85	80 x 60	3/16	1 1/8
LIX-POHI 125G-OF-XAT	BX-POHI 125G-XAT	LIX-POHI 125G-FI-OF-XAT	5 [125]	1 1/8 [40]	330 [150]	Plain bore	5 7/8 [150]	100 x 85	80 x 60	3/16	1 1/8

All casters do not include any grease in the swivel head.

Includes teflon-coated stainless steel spacers (XAT)



More options online!

Options



Product Code Suffix	-HXK	Remove suffix -OF	LIX-ALSI series	LIX-POHI series	LIXR series	LIKX series	LIX-POH series
Available for	POHI series Consult factory	Consult factory	Consult factory	Consult factory	Consult factory	Consult factory	Consult factory

\* Operating temperature intermittently up to +430° F

More options online!

Options



Product Code Suffix	-SG	-AG	RI-05.03	P / PS series	-SN	-AS	LS-VLE series
Available for	P series Consult factory	P series Consult factory	P series, Ø 8" Consult factory	Consult factory	VLE series Consult factory	VLE series Consult factory	Consult factory

\*\* Only for swivel casters without brake

\*\*\* Up to a diameter of 21" and a load capacity of 2,860 lbs

\*\*\*\* Up to a diameter of 20" and a load capacity of 4,150 lbs