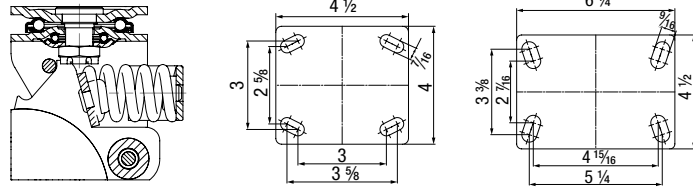


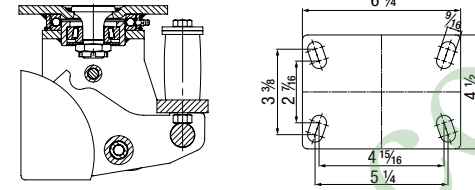
## LHF 14/16-Series Medium Duty Spring-Loaded Top Plate Casters with Steel Spring

260 - 680 lbs ✓RoHS



## LSFE 16-Series Heavy Duty Spring-Loaded Top Plate Casters with Polyurethane Spring

390 - 610 lbs ✓RoHS



**ALEV**  
Tires: High-quality elastic solid rubber in smooth rolling quality 'Blickle EasyRoll', 65° shore A, non-marking gray. Vulcanized tire. Wheel center: Die-cast aluminum. Bearing type: Ball bearing. For more information refer to page 76

**ALTH**  
Tread: High-quality polyurethane-elastomer Blickle Extrathane®, 92° shore A, light brown, non-marking, non-staining. Cast tread. Wheel center: Die-cast aluminum. Bearing type: Ball bearing. For more information refer to page 82

**ALST**  
Tread: High-quality polyurethane-elastomer Blickle Softhane®, 75° shore A, green, non-marking, non-staining. Cast tread. Wheel center: Die-cast aluminum. Bearing type: Ball bearing. For more information refer to page 80

**ALBS**  
Tread: High-quality polyurethane-elastomer Blickle Besthane®, 75° shore A, blue, non-marking, non-staining. Cast tread. Wheel center: Die-cast aluminum. Bearing type: Ball bearing. For more information refer to page 81

**SE**  
Tires: High-quality elastic solid rubber in smooth rolling quality 'Blickle EasyRoll', 65° shore A, black. Vulcanized tire. Wheel center: Pressed steel, lacquered, anthracite. Bearing type: Ball bearing. For more information refer to page 76

**GST**  
Tread: High-quality polyurethane-elastomer Blickle Softhane®, 75° shore A, green, non-marking, non-staining. Cast tread. Wheel center: Rugged gray cast iron, lacquered, silver. Bearing type: Ball bearing. For more information refer to page 80

**GTH**  
Tread: High-quality polyurethane-elastomer Blickle Extrathane®, 92° shore A, light brown, non-marking, non-staining. Cast tread. Wheel center: Rugged gray cast iron, lacquered, silver. Bearing type: Ball bearing. For more information refer to page 83

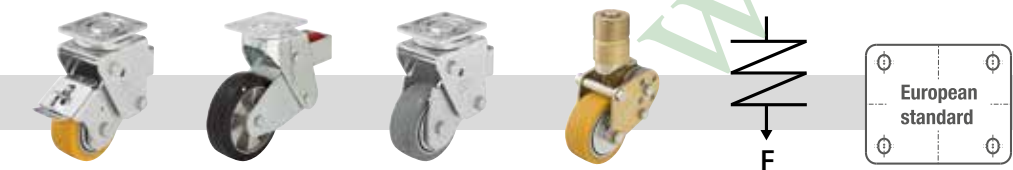
**GB**  
Tread: High-quality polyurethane-elastomer Blickle Besthane®, 92° shore A, brown, non-marking, non-staining. Cast tread. Wheel center: Rugged gray cast iron, lacquered, silver. Bearing type: Ball bearing. For more information refer to page 85

| Swivel Casters         | Rigid Casters         | Wheel Ø     | Wheel Width | Capacity *** | Spring Tension | Initial Tension | Spring Travel | Total Height | Plate Size    | Bolt Hole Spacing         | For Mounting Bolt | Swivel Lead |
|------------------------|-----------------------|-------------|-------------|--------------|----------------|-----------------|---------------|--------------|---------------|---------------------------|-------------------|-------------|
|                        |                       | [inch] [mm] | [inch] [mm] | [lbs] [kg]   | [lbs] [kg]     | [lbs] [kg]      | [inch] [mm]   | [inch] [mm]  | [inch]        | [inch]                    | [inch]            | [inch]      |
| <b>LHF-ALEV Series</b> |                       |             |             |              |                |                 |               |              |               |                           |                   |             |
| LHF-ALEV 100K-14-SG    | BHF-ALEV 100K-14-SG   | 4           | 1 1/16      | 260          | 440            | 66              | 3/4           | 6 3/8        | 4 x 4 1/2     | 2 1/8x3 3/8 / 3x3         | 3/8               | 1 1/4       |
| LHF-ALEV 125K-14-SG    | BHF-ALEV 125K-14-SG   | 5           | 1 1/8       | 300          | 530            | 66              | 13/16         | 7 1/8        | 4 x 4 1/2     | 2 1/8x3 3/8 / 3x3         | 3/8               | 1 1/4       |
| LHF-ALEV 150K-16-SG    | BHF-ALEV 150K-16-SG   | 6           | 2           | 500          | 880            | 110             | 1             | 9 1/2        | 4 1/2 x 6 1/4 | 2 1/8x4 1/8 / 3 1/8x5 1/4 | 1/2               | 2 1/8       |
| LHF-ALEV 200K-16-SG    | BHF-ALEV 200K-16-SG   | 8           | 2           | 500          | 880            | 110             | 1             | 10 1/8       | 4 1/2 x 6 1/4 | 2 1/8x4 1/8 / 3 1/8x5 1/4 | 1/2               | 2 1/8       |
| <b>LHF-ALTH Series</b> |                       |             |             |              |                |                 |               |              |               |                           |                   |             |
| LHF-ALTH 101K-14-FA*   | BHF-ALTH 101K-14-FA*  | 4           | 1 1/16      | 260          | 440            | 66              | 3/4           | 6 3/8        | 4 x 4 1/2     | 2 1/8x3 3/8 / 3x3         | 3/8               | 1 1/4       |
| LHF-ALTH 125K-14-FA*   | BHF-ALTH 125K-14-FA*  | 5           | 1 1/8       | 300          | 530            | 66              | 13/16         | 7 1/8        | 4 x 4 1/2     | 2 1/8x3 3/8 / 3x3         | 3/8               | 1 1/4       |
| LHF-ALTH 150K-16       | BHF-ALTH 150K-16      | 6           | 2           | 680          | 1255           | 110             | 1             | 9 1/2        | 4 1/2 x 6 1/4 | 2 1/8x4 1/8 / 3 1/8x5 1/4 | 1/2               | 2 1/8       |
| LHF-ALTH 200K-16       | BHF-ALTH 200K-16      | 8           | 2           | 680          | 1255           | 110             | 1             | 10 1/8       | 4 1/2 x 6 1/4 | 2 1/8x4 1/8 / 3 1/8x5 1/4 | 1/2               | 2 1/8       |
| <b>LHF-ALST Series</b> |                       |             |             |              |                |                 |               |              |               |                           |                   |             |
| LHF-ALST 100K-14       | BHF-ALST 100K-14      | 4           | 1 1/16      | 260          | 440            | 66              | 3/4           | 6 3/8        | 4 x 4 1/2     | 2 1/8x3 3/8 / 3x3         | 3/8               | 1 1/4       |
| LHF-ALST 125K-14       | BHF-ALST 125K-14      | 5           | 1 1/8       | 300          | 530            | 66              | 13/16         | 7 1/8        | 4 x 4 1/2     | 2 1/8x3 3/8 / 3x3         | 3/8               | 1 1/4       |
| LHF-ALST 150K-16       | BHF-ALST 150K-16      | 6           | 2           | 680          | 1255           | 110             | 1             | 9 1/2        | 4 1/2 x 6 1/4 | 2 1/8x4 1/8 / 3 1/8x5 1/4 | 1/2               | 2 1/8       |
| LHF-ALST 150K-16-CO**  | BHF-ALST 150K-16-CO** | 6           | 2           | 680          | 1255           | 110             | 1             | 9 1/2        | 4 1/2 x 6 1/4 | 2 1/8x4 1/8 / 3 1/8x5 1/4 | 1/2               | 2 1/8       |
| LHF-ALST 200K-16       | BHF-ALST 200K-16      | 8           | 2           | 680          | 1255           | 110             | 1             | 10 1/8       | 4 1/2 x 6 1/4 | 2 1/8x4 1/8 / 3 1/8x5 1/4 | 1/2               | 2 1/8       |
| LHF-ALST 200K-16-CO**  | BHF-ALST 200K-16-CO** | 8           | 2           | 680          | 1255           | 110             | 1             | 10 1/8       | 4 1/2 x 6 1/4 | 2 1/8x4 1/8 / 3 1/8x5 1/4 | 1/2               | 2 1/8       |
| <b>LHF-ALBS Series</b> |                       |             |             |              |                |                 |               |              |               |                           |                   |             |
| LHF-ALBS 100K-14       | BHF-ALBS 100K-14      | 4           | 1 1/16      | 260          | 440            | 66              | 3/4           | 6 3/8        | 4 x 4 1/2     | 2 1/8x3 3/8 / 3x3         | 3/8               | 1 1/4       |
| LHF-ALBS 125K-14       | BHF-ALBS 125K-14      | 5           | 1 1/8       | 300          | 530            | 66              | 13/16         | 7 1/8        | 4 x 4 1/2     | 2 1/8x3 3/8 / 3x3         | 3/8               | 1 1/4       |
| LHF-ALBS 150K-16       | BHF-ALBS 150K-16      | 6           | 2           | 680          | 1255           | 110             | 1             | 9 1/2        | 4 1/2 x 6 1/4 | 2 1/8x4 1/8 / 3 1/8x5 1/4 | 1/2               | 2 1/8       |
| LHF-ALBS 200K-16       | BHF-ALBS 200K-16      | 8           | 2           | 680          | 1255           | 110             | 1             | 10 1/8       | 4 1/2 x 6 1/4 | 2 1/8x4 1/8 / 3 1/8x5 1/4 | 1/2               | 2 1/8       |

| Swivel Casters         | Rigid Casters    | Wheel Ø     | Wheel Width | Capacity * | Spring Tension | Initial Tension | Spring Travel | Total Height | Plate Size    | Bolt Hole Spacing         | For Mounting Bolt | Swivel Lead |
|------------------------|------------------|-------------|-------------|------------|----------------|-----------------|---------------|--------------|---------------|---------------------------|-------------------|-------------|
|                        |                  | [inch] [mm] | [inch] [mm] | [lbs] [kg] | [lbs] [kg]     | [lbs] [kg]      | [inch] [mm]   | [inch] [mm]  | [inch]        | [inch]                    | [inch]            | [inch]      |
| <b>LSFE-SE Series</b>  |                  |             |             |            |                |                 |               |              |               |                           |                   |             |
| LSFE-SE 160K-16        | BSFE-SE 160K-16  | 6 3/8       | 2           | 390        | 660            | 110             | 1             | 9 3/8        | 4 1/2 x 6 1/4 | 2 1/8x4 1/8 / 3 1/8x5 1/4 | 1/2               | 4           |
| LSFE-SE 200K-16        | BSFE-SE 200K-16  | 8           | 2           | 610        | 1100           | 110             | 1             | 10 1/8       | 4 1/2 x 6 1/4 | 2 1/8x4 1/8 / 3 1/8x5 1/4 | 1/2               | 4           |
| <b>LSFE-GST Series</b> |                  |             |             |            |                |                 |               |              |               |                           |                   |             |
| LSFE-GST 150K-16       | BSFE-GST 150K-16 | 6           | 2           | 610        | 1100           | 110             | 1             | 9 1/2        | 4 1/2 x 6 1/4 | 2 1/8x4 1/8 / 3 1/8x5 1/4 | 1/2               | 4           |
| LSFE-GST 200K-16       | BSFE-GST 200K-16 | 8           | 2           | 610        | 1100           | 110             | 1             | 10 1/8       | 4 1/2 x 6 1/4 | 2 1/8x4 1/8 / 3 1/8x5 1/4 | 1/2               | 4           |
| <b>LSFE-GTH Series</b> |                  |             |             |            |                |                 |               |              |               |                           |                   |             |
| LSFE-GTH 150K-16       | BSFE-GTH 150K-16 | 6           | 2           | 610        | 1100           | 110             | 1             | 9 1/2        | 4 1/2 x 6 1/4 | 2 1/8x4 1/8 / 3 1/8x5 1/4 | 1/2               | 4           |
| LSFE-GTH 200K-16       | BSFE-GTH 200K-16 | 8           | 2           | 610        | 1100           | 110             | 1             | 10 1/8       | 4 1/2 x 6 1/4 | 2 1/8x4 1/8 / 3 1/8x5 1/4 | 1/2               | 4           |
| <b>LSFE-GB Series</b>  |                  |             |             |            |                |                 |               |              |               |                           |                   |             |
| LSFE-GB 150K-16        | BSFE-GB 150K-16  | 6           | 2           | 610        | 1100           | 110             | 1             | 9 1/2        | 4 1/2 x 6 1/4 | 2 1/8x4 1/8 / 3 1/8x5 1/4 | 1/2               | 4           |
| LSFE-GB 200K-16        | BSFE-GB 200K-16  | 8           | 2           | 610        | 1100           | 110             | 1             | 10 1/8       | 4 1/2 x 6 1/4 | 2 1/8x4 1/8 / 3 1/8x5 1/4 | 1/2               | 4           |

\* At 50 % spring deflection

### Options



| Options             | With 'Radstop' Tread Lock (Foot-Operated) | Electrically Conductive Version, Black Rubber Tire | Antistatic Version, Non-Marking Gray | Other Designs   | With Alternative Spring Tensions | European Metric Top Plate Fitting |
|---------------------|---|--|--------------------------------------|-----------------|----------------------------------|-----------------------------------|
| Product Code Suffix | -RA                                       | -EL  | -AS                                  |                 |                                  |                                   |
| Available for       | Consult factory                           | ALEV series<br>Consult factory                     | ALTH series<br>Consult factory       | Consult factory | Consult factory                  | Consult factory                   |

### Options



| Options             | With 'Radstop' Tread Lock (Foot-Operated) | With Swivel Lock | With Non-Marking Gray Rubber Tire | Antistatic Version, Non-Marking Gray | With Alternative Spring Tensions | Further Dimensions up to 12" and a Load Capacity of 5,300 lbs | European Metric Top Plate Fitting |
|---------------------|---|------------------|-----------------------------------|--------------------------------------|----------------------------------|---|-----------------------------------|
| Product Code Suffix | -RA                                       | -RI              | -SG                               | -AS                                  |                                  |   |                                   |
| Available for       | Consult factory                           | Consult factory  | SE series<br>Consult factory      | GTH series<br>Consult factory        | Consult factory                  | Consult factory   | Consult factory                   |

\* With pressed steel thread guard, zinc-plated  
\*\* With extra crowned running tread  
\*\*\* At 50 % spring deflection