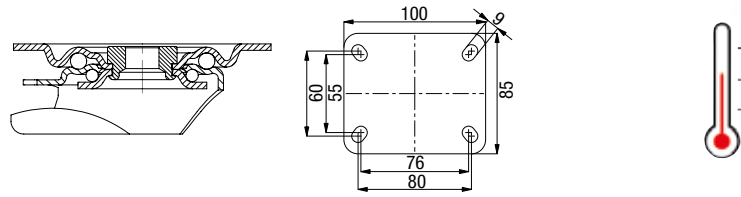


## LIX Series

Medium Duty Heat-Resistant Stainless Steel Industrial Top Plate Casters - Metric Standards

220 - 330 lbs    -15° F - +480° F    ✓RoHS



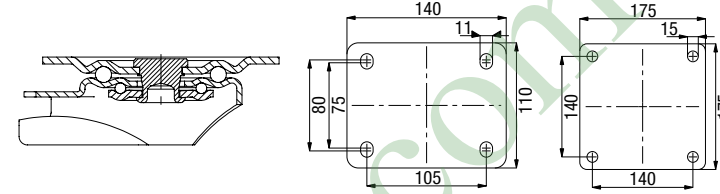
- POSI** Tread: Highly heat-resistant silicone rubber Blickle TempLine® Comfort, 75° shore A, black, **non-marking**. Vulcanized tire. Wheel center: Impact and heat-resistant, glass-filled nylon, gray. Bearing type: Plain bore with teflon-coated stainless steel spacers. For more information refer to page 93
- POHI** Wheel: High-quality, impact and heat-resistant, glass-filled nylon Blickle TempLine® Performance, 85° shore D, gray. Bearing type: Plain bore with teflon-coated stainless steel spacers. For more information refer to page 94



## Castors with Pneumatic and Soft Solid Tires

Medium Duty Industrial Top Plate Casters - Metric Standards

165 - 1,000 lbs    ✓RoHS



- P** Tires: Pneumatic tires with ribbed or sawtooth profile, 2 or 4 ply rating, with tube, black. Rim: Pressed steel, with tubular steel hub, zinc-plated, blue-passivated, Cr6-free. Bearing type: Roller bearing. For more information refer to page 86

- VLE** Tires: 2-component tires with hard rubber core and super-elastic, abrasion-resistant tread, steel-wire reinforced, black, **puncture proof**. Rims: Heavy pressed steel, bolted (flat based rim), with tubular steel hub, zinc-plated, blue-passivated, Cr6-free. Bearing type: Ball bearing. For more information refer to page 87



Swivel Casters	Rigid Casters	Swivel Casters with 'Stop-Fix' Brake	Wheel Ø [inch] [mm]	Wheel Width [inch] [mm]	Load Capacity [lbs] [kg]	Bearing Type	Total Height [inch] [mm]	Plate Size [mm]	Bolt Hole Spacing [mm]	For Mounting Bolt [inch]	Swivel Lead [inch]
<b>LIX-POSI Series</b>											
LIX-POSI 100G-OF-XAT	BX-POSI 100G-XAT	LIX-POSI 100G-FI-OF-XAT	4 [100]	1 1/8 [40]	220 [100]	Plain bore	4 1/8 [125]	100 x 85	80 x 60	3/16	1 1/8
LIX-POSI 125G-OF-XAT	BX-POSI 125G-XAT	LIX-POSI 125G-FI-OF-XAT	5 [125]	1 1/8 [40]	265 [120]	Plain bore	5 7/8 [150]	100 x 85	80 x 60	3/16	1 1/8
<b>LIX-POHI Series</b>											
LIX-POHI 100G-OF-XAT	BX-POHI 100G-XAT	LIX-POHI 100G-FI-OF-XAT	4 [100]	1 1/8 [30]	330 [150]	Plain bore	4 1/8 [125]	100 x 85	80 x 60	3/16	1 1/8
LIX-POHI 125G-OF-XAT	BX-POHI 125G-XAT	LIX-POHI 125G-FI-OF-XAT	5 [125]	1 1/8 [40]	330 [150]	Plain bore	5 7/8 [150]	100 x 85	80 x 60	3/16	1 1/8

All casters do not include any grease in the swivel head.

Includes teflon-coated stainless steel spacers (XAT)



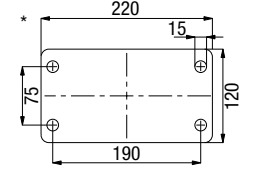
More options online!



Options	With High Temperature Stainless Steel Ball Bearings in the Wheel	With Heat-Resistant Grease in the Swivel Head	With Silicone Rubber Tread and Aluminum Wheel Center	With Bigger Wheel Diameters	With Hollow Kingpin for Mounting Bolt Ø 1/2"	Stainless Steel Heat-Resistant Medium Duty Casters	Natural Color, Temperature Range -20° F to +340° F *
<b>Product Code Suffix</b>	-HXK	Remove suffix -OF	LIX-ALSI series	LIX-POHI series	LIXR series	LIKX series	LIX-POH series
<b>Available for</b>	POHI series Consult factory	Consult factory	Consult factory	Consult factory	Consult factory	Consult factory	Consult factory

\* Operating temperature intermittently up to +430° F

Swivel Casters	Rigid Casters	Swivel Casters with 'Stop-Top' Brake	Wheel Ø [inch] [mm]	Tire Width [inch] [mm]	Load Capacity [lbs] [kg]	Bearing Type	Total Height [inch] [mm]	Plate Size [mm]	Bolt Hole Spacing [mm]	For Mounting Bolt [inch]	Swivel Lead [inch]	Profile
<b>L-P Series</b>												
L-P 200R	B-P 200R	L-P 200R-ST	8 [200]	2 [50]	165 [75]	Roller bearing	9 1/4 [235]	140 x 110	105 x 75-80	3/8	2 1/2	R01
L-P 222R	B-P 222R	L-P 222R-ST	8 3/8 [220]	2 1/2 [65]	220 [100]	Roller bearing	10 1/4 [255]	140 x 110	105 x 75-80	3/8	2 4/8	B01
L-P 263R	B-P 263R	L-P 263R-ST	10 7/32 [260]	3 1/2 [85]	330 [150]	Roller bearing	12 1/2 [308]	175 x 175	140 x 140	1/2	3 3/4	B02
	B-P 263R *		10 7/32 [260]	3 1/2 [85]	330 [150]	Roller bearing	12 1/2 [308]	220 x 120	190 x 75	1/2		B02
L-P 267R	B-P 267R	L-P 267R-ST	10 7/32 [260]	3 1/2 [85]	550 [250]	Roller bearing	12 1/2 [308]	175 x 175	140 x 140	1/2	3 3/4	B02
	B-P 267R *		10 7/32 [260]	3 1/2 [85]	550 [250]	Roller bearing	12 1/2 [308]	220 x 120	190 x 75	1/2		B02
<b>L-VLE Series (Puncture Proof)</b>												
L-VLE 250K	B-VLE 250K	L-VLE 250K-ST	10 [250]	3 1/2 [85]	1000 [450]	Ball bearing	11 3/4 [295]	175 x 175	140 x 140	1/2	2 3/4	R50
	B-VLE 250K *		10 [250]	3 1/2 [85]	1000 [450]	Ball bearing	11 3/4 [295]	220 x 120	190 x 75	1/2		R50
L-VLE 255K	B-VLE 255K	L-VLE 255K-ST	10 [250]	3 1/2 [85]	1000 [450]	Ball bearing	11 3/4 [295]	175 x 175	140 x 140	1/2	2 3/4	B51
	B-VLE 255K *		10 [250]	3 1/2 [85]	1000 [450]	Ball bearing	11 3/4 [295]	220 x 120	190 x 75	1/2		B51



More options online!



Options	With Non-Marking Gray Rubber Tire	With Puncture-Proof, Foam-Filled Tire	Swivel Lock (Retro Fit) 1 x 360° **	More Heavy Duty Casters ***	With Non-Marking Gray Rubber Tire	Antistatic Version, Black Rubber Tire	More Heavy Duty Casters ****
<b>Product Code Suffix</b>	-SG	-AG	RI-05.03	P / PS series	-SN	-AS	LS-VLE series
<b>Available for</b>	P series Consult factory	P series Consult factory	P series, Ø 8" Consult factory	Consult factory	VLE series Consult factory	VLE series Consult factory	Consult factory

\*\* Only for swivel casters without brake

\*\*\* Up to a diameter of 21" and a load capacity of 2,860 lbs

\*\*\*\* Up to a diameter of 20" and a load capacity of 4,150 lbs