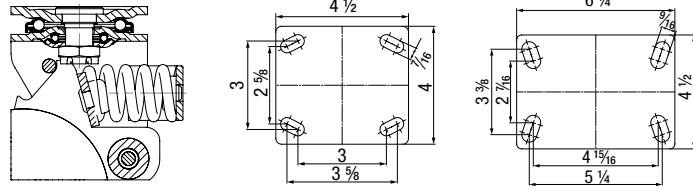


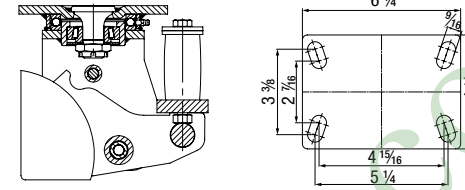
LHF 14/16-Series Medium Duty Spring-Loaded Top Plate Casters with Steel Spring

260 - 680 lbs ✓RoHS



LSFE 16-Series Heavy Duty Spring-Loaded Top Plate Casters with Polyurethane Spring

390 - 610 lbs ✓RoHS



ALEV
Tires: High-quality elastic solid rubber in smooth rolling quality 'Blickle EasyRoll', 65° shore A, non-marking gray. Vulcanized tire. Wheel center: Die-cast aluminum. Bearing type: Ball bearing. For more information refer to page 76

ALTH
Tread: High-quality polyurethane-elastomer Blickle Extrathane®, 92° shore A, light brown, non-marking, non-staining. Cast tread. Wheel center: Die-cast aluminum. Bearing type: Ball bearing. For more information refer to page 82

ALST
Tread: High-quality polyurethane-elastomer Blickle Softhane®, 75° shore A, green, non-marking, non-staining. Cast tread. Wheel center: Die-cast aluminum. Bearing type: Ball bearing. For more information refer to page 80

ALBS
Tread: High-quality polyurethane-elastomer Blickle Besthane®, 75° shore A, blue, non-marking, non-staining. Cast tread. Wheel center: Die-cast aluminum. Bearing type: Ball bearing. For more information refer to page 81

SE
Tires: High-quality elastic solid rubber in smooth rolling quality 'Blickle EasyRoll', 65° shore A, black. Vulcanized tire. Wheel center: Pressed steel, lacquered, anthracite. Bearing type: Ball bearing. For more information refer to page 76

GST
Tread: High-quality polyurethane-elastomer Blickle Softhane®, 75° shore A, green, non-marking, non-staining. Cast tread. Wheel center: Rugged gray cast iron, lacquered, silver. Bearing type: Ball bearing. For more information refer to page 80

GTH
Tread: High-quality polyurethane-elastomer Blickle Extrathane®, 92° shore A, light brown, non-marking, non-staining. Cast tread. Wheel center: Rugged gray cast iron, lacquered, silver. Bearing type: Ball bearing. For more information refer to page 83

GB
Tread: High-quality polyurethane-elastomer Blickle Besthane®, 92° shore A, brown, non-marking, non-staining. Cast tread. Wheel center: Rugged gray cast iron, lacquered, silver. Bearing type: Ball bearing. For more information refer to page 85

Swivel Casters	Rigid Casters	Wheel Ø	Wheel Width	Capacity ***	Spring Tension	Initial Tension	Spring Travel	Total Height	Plate Size	Bolt Hole Spacing	For Mounting Bolt	Swivel Lead
		[inch] [mm]	[inch] [mm]	[lbs] [kg]	[lbs] [kg]	[lbs] [kg]	[inch] [mm]	[inch] [mm]	[inch]	[inch]	[inch]	[inch]
LHF-ALEV Series												
LHF-ALEV 100K-14-SG	BHF-ALEV 100K-14-SG	4	1 1/8	260	440	66	3/4	6 3/8	4 x 4 1/2	2 1/2 x 3 3/8 / 3x3	3/8	1 1/4
LHF-ALEV 125K-14-SG	BHF-ALEV 125K-14-SG	5	1 1/8	300	530	66	3/8	7 1/8	4 x 4 1/2	2 1/2 x 3 3/8 / 3x3	3/8	1 1/4
LHF-ALEV 150K-16-SG	BHF-ALEV 150K-16-SG	6	2	500	880	110	1	9 1/2	4 1/2 x 6 1/4	2 1/2 x 4 1/8 / 3 3/8 x 5 1/4	1/2	2 3/8
LHF-ALEV 200K-16-SG	BHF-ALEV 200K-16-SG	8	2	500	880	110	1	10 1/8	4 1/2 x 6 1/4	2 1/2 x 4 1/8 / 3 3/8 x 5 1/4	1/2	2 3/8
LHF-ALTH Series												
LHF-ALTH 101K-14-FA*	BHF-ALTH 101K-14-FA*	4	1 1/8	260	440	66	3/4	6 3/8	4 x 4 1/2	2 1/2 x 3 3/8 / 3x3	3/8	1 1/4
LHF-ALTH 125K-14-FA*	BHF-ALTH 125K-14-FA*	5	1 1/8	300	530	66	3/8	7 1/8	4 x 4 1/2	2 1/2 x 3 3/8 / 3x3	3/8	1 1/4
LHF-ALTH 150K-16	BHF-ALTH 150K-16	6	2	680	1255	110	1	9 1/2	4 1/2 x 6 1/4	2 1/2 x 4 1/8 / 3 3/8 x 5 1/4	1/2	2 3/8
LHF-ALTH 200K-16	BHF-ALTH 200K-16	8	2	680	1255	110	1	10 1/8	4 1/2 x 6 1/4	2 1/2 x 4 1/8 / 3 3/8 x 5 1/4	1/2	2 3/8
LHF-ALST Series												
LHF-ALST 100K-14	BHF-ALST 100K-14	4	1 1/8	260	440	66	3/4	6 3/8	4 x 4 1/2	2 1/2 x 3 3/8 / 3x3	3/8	1 1/4
LHF-ALST 125K-14	BHF-ALST 125K-14	5	1 1/8	300	530	66	3/8	7 1/8	4 x 4 1/2	2 1/2 x 3 3/8 / 3x3	3/8	1 1/4
LHF-ALST 150K-16	BHF-ALST 150K-16	6	2	680	1255	110	1	9 1/2	4 1/2 x 6 1/4	2 1/2 x 4 1/8 / 3 3/8 x 5 1/4	1/2	2 3/8
LHF-ALST 150K-16-CO**	BHF-ALST 150K-16-CO**	6	2	680	1255	110	1	9 1/2	4 1/2 x 6 1/4	2 1/2 x 4 1/8 / 3 3/8 x 5 1/4	1/2	2 3/8
LHF-ALST 200K-16	BHF-ALST 200K-16	8	2	680	1255	110	1	10 1/8	4 1/2 x 6 1/4	2 1/2 x 4 1/8 / 3 3/8 x 5 1/4	1/2	2 3/8
LHF-ALST 200K-16-CO**	BHF-ALST 200K-16-CO**	8	2	680	1255	110	1	10 1/8	4 1/2 x 6 1/4	2 1/2 x 4 1/8 / 3 3/8 x 5 1/4	1/2	2 3/8
LHF-ALBS Series												
LHF-ALBS 100K-14	BHF-ALBS 100K-14	4	1 1/8	260	440	66	3/4	6 3/8	4 x 4 1/2	2 1/2 x 3 3/8 / 3x3	3/8	1 1/4
LHF-ALBS 125K-14	BHF-ALBS 125K-14	5	1 1/8	300	530	66	3/8	7 1/8	4 x 4 1/2	2 1/2 x 3 3/8 / 3x3	3/8	1 1/4
LHF-ALBS 150K-16	BHF-ALBS 150K-16	6	2	680	1255	110	1	9 1/2	4 1/2 x 6 1/4	2 1/2 x 4 1/8 / 3 3/8 x 5 1/4	1/2	2 3/8
LHF-ALBS 200K-16	BHF-ALBS 200K-16	8	2	680	1255	110	1	10 1/8	4 1/2 x 6 1/4	2 1/2 x 4 1/8 / 3 3/8 x 5 1/4	1/2	2 3/8

Options

With 'Radstop' Tread Lock (Foot-Operated)	Electrically Conductive Version, Black Rubber Tire	Antistatic Version, Non-Marking Gray	Other Designs	With Alternative Spring Tensions	European Metric Top Plate Fitting
Product Code Suffix	-RA	-EL	-AS		
Available for	Consult factory	ALEV series Consult factory	ALTH series Consult factory	Consult factory	Consult factory

Swivel Casters	Rigid Casters	Wheel Ø	Wheel Width	Capacity *	Spring Tension	Initial Tension	Spring Travel	Total Height	Plate Size	Bolt Hole Spacing	For Mounting Bolt	Swivel Lead
		[inch] [mm]	[inch] [mm]	[lbs] [kg]	[lbs] [kg]	[lbs] [kg]	[inch] [mm]	[inch] [mm]	[inch]	[inch]	[inch]	[inch]
LSFE-SE Series												
LSFE-SE 160K-16	BSFE-SE 160K-16	6 3/8	2	390	660	110	1	9 3/8	4 1/2 x 6 1/4	2 1/2 x 4 1/8 / 3 3/8 x 5 1/4	1/2	4
LSFE-SE 200K-16	BSFE-SE 200K-16	8	2	610	1100	110	1	10 1/8	4 1/2 x 6 1/4	2 1/2 x 4 1/8 / 3 3/8 x 5 1/4	1/2	4
LSFE-GST Series												
LSFE-GST 150K-16	BSFE-GST 150K-16	6	2	610	1100	110	1	9 1/2	4 1/2 x 6 1/4	2 1/2 x 4 1/8 / 3 3/8 x 5 1/4	1/2	4
LSFE-GST 200K-16	BSFE-GST 200K-16	8	2	610	1100	110	1	10 1/8	4 1/2 x 6 1/4	2 1/2 x 4 1/8 / 3 3/8 x 5 1/4	1/2	4
LSFE-GTH Series												
LSFE-GTH 150K-16	BSFE-GTH 150K-16	6	2	610	1100	110	1	9 1/2	4 1/2 x 6 1/4	2 1/2 x 4 1/8 / 3 3/8 x 5 1/4	1/2	4
LSFE-GTH 200K-16	BSFE-GTH 200K-16	8	2	610	1100	110	1	10 1/8	4 1/2 x 6 1/4	2 1/2 x 4 1/8 / 3 3/8 x 5 1/4	1/2	4
LSFE-GB Series												
LSFE-GB 150K-16	BSFE-GB 150K-16	6	2	610	1100	110	1	9 1/2	4 1/2 x 6 1/4	2 1/2 x 4 1/8 / 3 3/8 x 5 1/4	1/2	4
LSFE-GB 200K-16	BSFE-GB 200K-16	8	2	610	1100	110	1	10 1/8	4 1/2 x 6 1/4	2 1/2 x 4 1/8 / 3 3/8 x 5 1/4	1/2	4

* At 50 % spring deflection

Options

With 'Radstop' Tread Lock (Foot-Operated)	With Swivel Lock	With Non-Marking Gray Rubber Tire	Antistatic Version, Non-Marking Gray	With Alternative Spring Tensions	Further Dimensions up to 12" and a Load Capacity of 5,300 lbs	European Metric Top Plate Fitting
Product Code Suffix	-RA	-RI	-SG	-AS		
Available for	Consult factory	Consult factory	SE series Consult factory	GTH series Consult factory	Consult factory	Consult factory

* With pressed steel thread guard, zinc-plated
** With extra crowned running tread
*** At 50 % spring deflection