






Contents: Section 17

Wheel series

Swivel bracket series (combined with the respective wheel series)

Wheel series		Swivel bracket series (combined with the respective wheel series)									
		BS									
 <p>SPK</p> <p>Series: SPK Wheel Ø [mm]: 50 - 250 mm Load capacity [kg]: 400 - 3500 kg Page: 294</p>	 <p>BS-SPK 125 - 250 mm 900 - 3500 kg 295</p>										
		 <p>SPKGSP0</p> <p>Series: SPKGSP0 Wheel Ø [mm]: 50 - 150 mm Load capacity [kg]: 220 - 900 kg Page: 296</p>									
			 <p>SPKVS</p> <p>Series: SPKVS Wheel Ø [mm]: 50 - 300 mm Load capacity [kg]: 500 - 7000 kg Page: 297</p>								
				 <p>DSPK</p> <p>Series: DSPK Wheel Ø [mm]: 100 - 200 mm Load capacity [kg]: 300 - 1200 kg Page: 298</p>							



Flanged wheels and castors

Series: SPK

Cast iron flanged wheels

 400 - 3500 kg



Made of grey cast iron, very rugged, machined flange and tread, tread ascent to axle 3°, high abrasion resistance, low rolling resistance, insensitive to metal swarf, grease nipple (wheel Ø 125-250 mm), plain or ball bearing, temperature range from -30°C to +140°C.

Lacquered - colour silver.
Detailed description: Page 50.

For application in extreme temperature ranges:

Plain bearing version:
-100°C to +600°C, load capacity reduction of 40 % at +600°C, lubrication with high temperature grease.

Heat-resistant ball bearing version (oven bearing):
-35°C to +300°C, load capacity reduction of 50 % at +300°C - refer to Variants / Accessories.

Plain bearing versions must be regularly lubricated.

Flanged wheels

Ref. No.	Wheel Ø without flange (D) [mm]	Wheel Ø incl. flange (D1) [mm]	Wheel width incl. flange (T2) [mm]	Tread width without flange (T3) [mm]	Flange length (T4) [mm]	Load capacity [kg]	Bearing version	Axle bore Ø (d) [mm]	Hub length (T1) [mm]
SPK 50G	50	62	32	26	6	400	Plain bearing	15	32
SPK 75G	75	100	40	30	13,5	700	Plain bearing	20	47
SPK 75K	75	100	40	30	13,5	700	Ball bearing	20	47
SPK 100G	100	125	46	36	13	800	Plain bearing	20	52
SPK 100K	100	125	46	36	13	800	Ball bearing	20	52
SPK 125G	125	145	46	36	13	900	Plain bearing	20	52
SPK 125K	125	145	46	36	13	900	Ball bearing	20	52
SPK 150G	150	175	46	36	13	1000	Plain bearing	20	52
SPK 150K	150	175	46	36	13	1000	Ball bearing	20	52
SPK 180G	180	210	46	36	13	1200	Plain bearing	30	52
SPK 180K	180	210	46	36	13	1200	Ball bearing	20	52
SPK 200G	200	230	56	38	20	1500	Plain bearing	30	60
SPK 200K	200	230	56	38	20	1500	Ball bearing	25	60
SPK 201K	200	230	80	60	25	3000	Ball bearing	40	90
SPK 250G	250	300	65	50	17,5	2500	Plain bearing	40	70
SPK 250K	250	300	65	50	17,5	2500	Ball bearing	30	70
SPK 251K	250	300	80	60	25	3500	Ball bearing	40	90

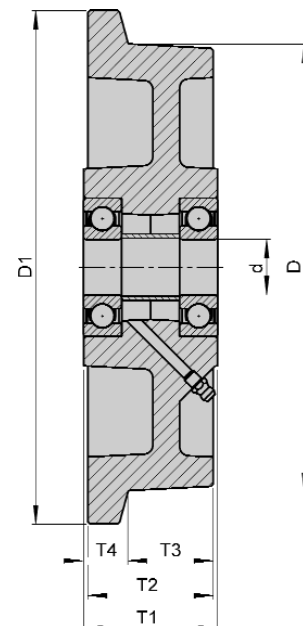
17

Variants / Accessories




With heat-resistant ball bearing (oven bearing)

Technical description page	50
Ref. No. extension	-IK
Available for wheel Ø [mm]	Upon request



Series: BS-SPK

Welded steel heavy duty fixed castors

 900 - 3500 kg



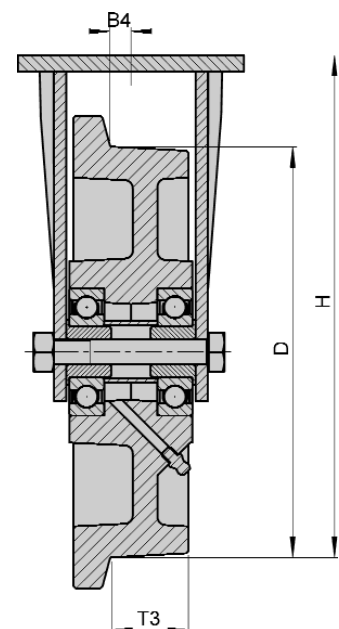
Brackets: BS Series - Very rugged welded steel construction, with especially reinforced fork for an improved absorption of axial forces, bolted wheel axle. Wheel dimensions 125x36 - 200x38 mm: Zinc-plated - yellow passivated, wheel dimensions 200x60 - 250x60 mm: Lacquered - colour red. Top plate drawings: Page 71 and 72.

Wheels: SPK Series - Made of grey cast iron, very rugged, machined flange and tread, tread ascent to axle 3°, high abrasion resistance, low rolling resistance, insensitive to metal swarf, with grease nipple, ball bearing. Lacquered - colour silver. Detailed description: Page 294 and 50.

Temperature range from -30°C to +140°C.


Fixed castors

Ref. No.	Wheel Ø without flange (D) [mm]	Tread width without flange (T3) [mm]	Flange length (B4) [mm]	Load capacity [kg]	Bearing version	Total height (H) [mm]	Plate size [mm]	Bolt hole spacing [mm]	Bolt hole Ø [mm]
BS-SPK 125K	125	36	13	900	Ball bearing	170	140 x 110	105 x 75-80	11
BS-SPK 150K	150	36	13	1000	Ball bearing	200	140 x 110	105 x 75-80	11
BS-SPK 200K	200	38	10	1500	Ball bearing	245	140 x 110	105 x 75-80	11
BS-SPK 201K	200	60	20	3000	Ball bearing	245	175 x 140	140 x 105	14
BS-SPK 250K	250	50	17,5	2500	Ball bearing	305	175 x 140	140 x 105	14
BS-SPK 251K	250	60	20	3500	Ball bearing	305	200 x 160	160 x 120	14



Series: SPKGSP0

Cast nylon flanged wheels

 220 - 900 kg



Made of hard and tough, highly compressed cast nylon, tread ascent to axle 3°, high load capacity, low-noise operation, high abrasion resistance, low rolling resistance, shock and impact-resistant, corrosion-resistant, high chemical resistance to alcohol, salts, greases and certain acids and lyes in diluted concentration, ball bearing, colour natural beige.
Detailed description: Page 50.

Flanged wheels

Ref. No.	Wheel Ø without flange (D) [mm]	Wheel Ø incl. flange (D1) [mm]	Wheel width incl. flange (T2) [mm]	Tread width without flange (T3) [mm]	Flange length (T4) [mm]	Load capacity [kg]	Bearing version	Axle bore Ø (d) [mm]	Hub length (T1) [mm]
SPKGSP0 50K	50	62	32	26	6	220	Ball bearing	15	32
SPKGSP0 75K	75	100	40	30	13,5	380	Ball bearing	20	47
SPKGSP0 100K	100	125	46	36	13	600	Ball bearing	20	52
SPKGSP0 125K	125	145	46	36	13	750	Ball bearing	20	52
SPKGSP0 150K	150	175	46	36	13	900	Ball bearing	20	52

17

Variants / Accessories



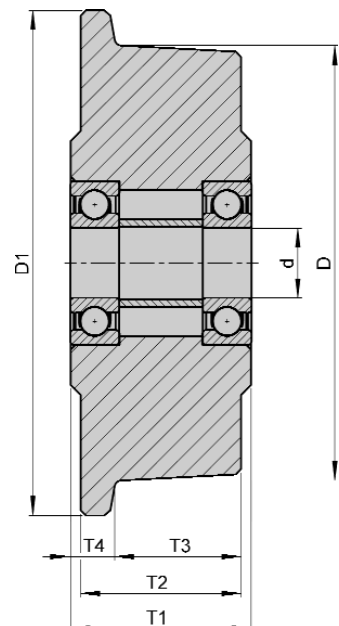
Further dimensions

Technical description page

Ref. No. extension


Available for wheel Ø [mm]

Upon request



Series: SPKVS

Solid-steel flanged wheels

 500 - 7000 kg



Made of special steel, tread ascent to axle 3°, with extremely high load capacity, very high abrasion resistance, very low rolling resistance, ball bearing, surface lightly oiled.
Detailed description: Page 51.

Flanged wheels

Ref. No.	Wheel Ø without flange (D) [mm]	Wheel Ø incl. flange (D1) [mm]	Wheel width incl. flange (T2) [mm]	Tread width without flange (T3) [mm]	Load capacity [kg]	Bearing version	Axle bore Ø (d) [mm]	Hub length (T1) [mm]
SPKVS 50K	50	62	40	30	500	Ball bearing	15	40
SPKVS 75K	75	100	40	30	800	Ball bearing	20	40
SPKVS 100K	100	125	50	40	1200	Ball bearing	25	50
SPKVS 125K	125	150	50	40	1500	Ball bearing	25	50
SPKVS 150K	150	180	60	48	2000	Ball bearing	30	60
SPKVS 200K	200	240	60	48	2500	Ball bearing	35	60
SPKVS 250K	250	290	75	60	4000	Ball bearing	45	75
SPKVS 300K	300	345	90	72	7000	Ball bearing	60	90

Variants / Accessories



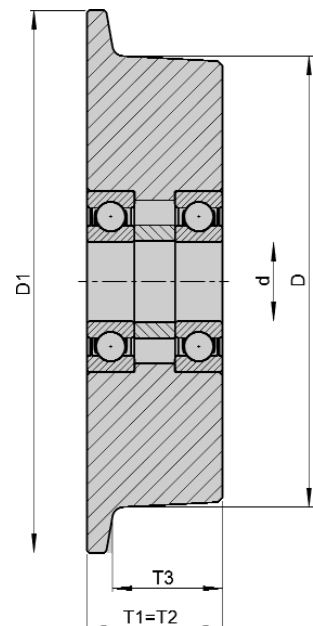
Further dimensions and versions

Technical description page

Ref. No. extension


Available for wheel Ø [mm]

Upon request



Series: DSPK

Solid-steel double flanged wheels

 300 - 1200 kg



Made of special steel, V-shaped tread, high load capacity, high abrasion resistance, ball bearing, surface lightly oiled.
Detailed description: Page 51.

Double-flanged wheels

Ref. No.	Wheel Ø (D) [mm]	Wheel width (T2) [mm]	Recess width (B) [mm]	Load capacity [kg]	Bearing version	Axle bore Ø (d) [mm]	Hub length (T1) [mm]
DSPK 100K	100	24	18	300	Ball bearing	15	24
DSPK 101K*	100	40	20	600	Ball bearing	15	40
DSPK 120K	120	33	25	600	Ball bearing	20	33
DSPK 125K*	125	50	25	1200	Ball bearing	20	50
DSPK 150K	150	33	25	800	Ball bearing	20	33
DSPK 200K	200	33	25	1000	Ball bearing	20	33

* Wheels with wide tread which can also run on the floor.

17

Variants / Accessories



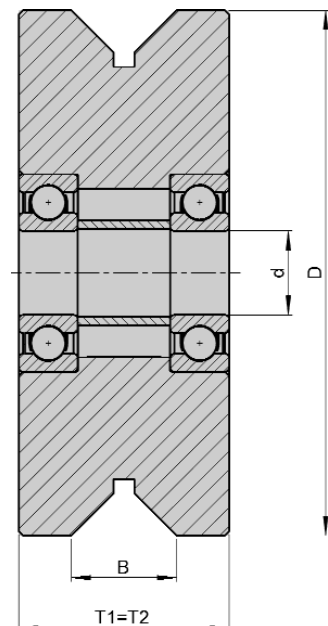
Further dimensions

Technical description page

Ref. No. extension

Available for wheel Ø [mm]

Upon request



Further information on the Internet: www.blickle.com