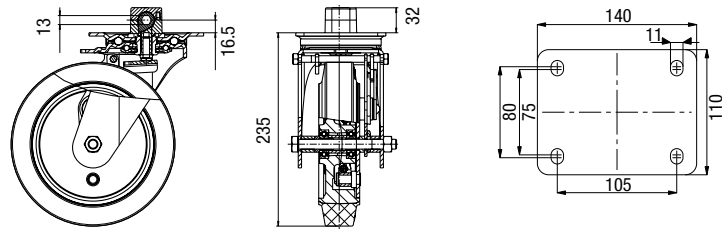


Dead Man's Brake Swivel Casters

Medium Duty Industrial Top Plate Swivel Casters - Metric Standards

880 lbs

✓RoHS



Swivel casters with dead man's wheel brake:
The dead man's brake is based on a drum brake, however an integrated spring ensures the brake is applied in a non-operated condition. Switch cam operated.



Swivel casters with dead man's wheel brake and swivel head brake:
The dead man's brake is based on a drum brake, however an integrated spring ensures the brake is applied in a non-operated condition. Switch cam operated.



GEV-wheel series:
Tires: Made of high-quality elastic solid rubber in smooth rolling quality, 65° shore A, non-marking gray. Vulcanized tire.
Wheel center: Made of rugged gray cast iron, lacquered, silver, with two pressed-in ball bearings.



GST-wheel series:
Tread: Made of high-quality polyurethane-elastomer Blicke Softhane®, 75° shore A, green, non-marking, non-staining. Cast tread.
Wheel center: Made of rugged gray cast iron, lacquered, silver, with two pressed-in ball bearings.



GTH-wheel series:
Tread: Made of high-quality polyurethane-elastomer Blicke Extrathane®, 92° shore A, light brown, non-marking, non-staining. Cast tread.
Wheel center: Made of rugged gray cast iron, lacquered, silver, with two pressed-in ball bearings.

The below brakes are operated by rotating a 13mm hex bar 38° (this requires < 10 Nm or < 7.4 ft lbs of force). This exerts a breaking force of over 600 N (135 lbs).

Swivel Casters with Dead Man's Brake	Swivel Casters with Dead Man's Brake and Swivel Head Brake	Wheel Ø	Wheel Width	Load Capacity	Bearing Type	Total Height	Plate Size	Bolt Hole Spacing	For Mounting Bolt
		[inch] [mm]	[inch] [mm]	[lbs] [kg]		[inch] [mm]	[mm]	[mm]	[inch]
L-GEV Series									
L-GEV 200K-TM13-SG	L-GEV 200K-TTM13-SG	8 [200]	2 [50]	880 [400]	Ball bearing	9 1/4 [235]	140 x 110	105 x 75-80	3/8"
L-GST Series									
L-GST 200K-TM13	L-GST 200K-TTM13	8 [200]	2 [50]	880 [400]	Ball bearing	9 1/4 [235]	140 x 110	105 x 75-80	3/8"
L-GTH Series									
L-GTH 200K-TM13	L-GTH 200K-TTM13	8 [200]	2 [50]	880 [400]	Ball bearing	9 1/4 [235]	140 x 110	105 x 75-80	3/8"

Options



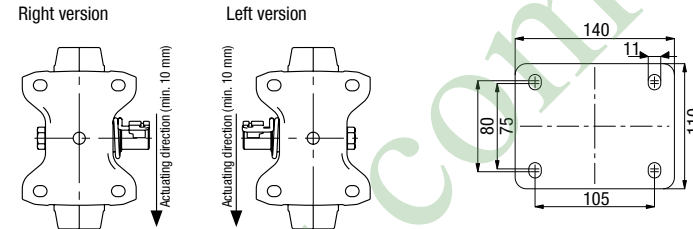
Options	Swivel Lock (Retro Fit) 1 x 360°	Dead Man's Wheel Brake Operated by Threaded Stem	Dead Man's Brake with Hydraulic Operating Systems	Further Dimensions	System Operated with Switch Cam 7/16"
Product Code Suffix	RI-05.03				-TM 7/16" / -TTM 7/16"
Available for	Consult factory	Consult factory	Consult factory	Consult factory	Consult factory

Drum and Dead Man's Brake Rigid Casters

Medium Duty Industrial Top Plate Rigid Casters - Metric Standards

1,000 - 1,350 lbs

✓RoHS



Rigid casters with drum brake:
Rigid casters with a drum brake can be operated by methods such as a cable pull or a lever arm. The enclosed design protects the brake shoes against corrosion and dirt. Therefore the brake performance is not affected by wet conditions or road contamination.



Rigid casters with dead man's brake:
Rigid casters with a dead man's brake are based on the drum brake caster design, however an integrated spring ensures the brake is applied in a non-operated condition. With a cable pull or lever arm the brake can be released.



GEV-wheel series:
Tires: Made of high-quality elastic solid rubber in smooth rolling quality, 65° shore A, non-marking gray. Vulcanized tire.
Wheel center: Made of rugged gray cast iron, lacquered, silver, with two pressed-in ball bearings.



GST-wheel series:
Tread: Made of high-quality polyurethane-elastomer Blicke Softhane®, 75° shore A, green, non-marking, non-staining. Cast tread.
Wheel center: Made of rugged gray cast iron, lacquered, silver, with two pressed-in ball bearings.



GTH-wheel series:
Tread: Made of high-quality polyurethane-elastomer Blicke Extrathane®, 92° shore A, light brown, non-marking, non-staining. Cast tread.
Wheel center: Made of rugged gray cast iron, lacquered, silver, with two pressed-in ball bearings.

The below brakes are operated by a cable pulled with ~ 55 pounds force (250 N) at the activation lever. This exerts a breaking force of over 125 pounds (600 N).

Rigid Casters with Drum Brake	Rigid Casters with Dead Man's Brake *	Wheel Ø	Wheel Width	Load Capacity	Bearing Type	Total Height	Plate Size	Bolt Hole Spacing	For Mounting Bolt
		[inch] [mm]	[inch] [mm]	[lbs] [kg]		[inch] [mm]	[mm]	[mm]	[inch]
B-GEV Series									
B-GEV 160K-TB-SG	B-GEV 160K-TM-SG	6 1/8 [160]	2 [50]	1000 [450]	Ball bearing	7 1/16 [195]	140 x 110	105 x 75-80	3/8"
B-GEV 200K-TB-SG	B-GEV 200K-TM-SG	8 [200]	2 [50]	1350 [600]	Ball bearing	9 1/4 [235]	140 x 110	105 x 75-80	3/8"
B-GST Series									
B-GST 200K-TB	B-GST 200K-TM	8 [200]	2 [50]	1350 [600]	Ball bearing	9 1/4 [235]	140 x 110	105 x 75-80	3/8"
B-GTH Series									
B-GTH 160K-TB	B-GTH 160K-TM	6 1/8 [160]	2 [50]	1350 [600]	Ball bearing	7 1/16 [195]	140 x 110	105 x 75-80	3/8"
B-GTH 200K-TB	B-GTH 200K-TM	8 [200]	2 [50]	1350 [600]	Ball bearing	9 1/4 [235]	140 x 110	105 x 75-80	3/8"

* These part numbers require the addition of an L or R after the TM to indicate if the pull lever is on the left or right of the caster.

More options online!

Options



Options	With Pneumatic Tires	With Super-Elastic Solid Rubber Tires, Puncture Proof	Rigid Brake Caster, Lever Operated	Rigid Brake Caster Operated by Hidden Switch Cam **	With Heavy Duty Rig	Further Dimensions	US-Standard Top Plate Fitting 4 1/2" x 6 1/4"
Product Code Suffix	PS series	VLE series			BH series		BS series
Available for	Consult factory	Consult factory	Consult factory	Consult factory	Consult factory	Consult factory	Consult factory

** 7/16" or 13 mm