



Premium Quality



Environmentally Friendly

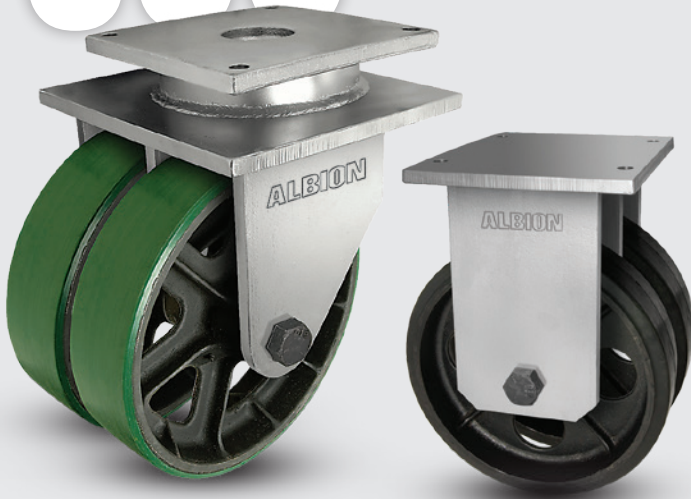


Towing[^]

850

Shockmaster Kingpinless Dual Wheel Casters

CAPACITY TO 30000



This dual wheel caster has been designed with features tailored to meet the varied needs of the aviation ground support equipment industry. 850 Series are equally at home in many other extremely abusive and rugged applications.

TYPICAL APPLICATIONS

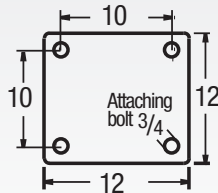
- Custom applications
- Towable transportation equipment
- Aircraft wing jacks and dollies
- Aircraft assembly fixtures
- Aircraft work platform stands

SWIVEL CROSS SECTION

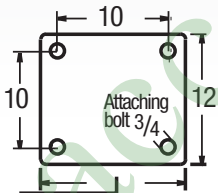


MOUNTING OPTION

Swivel Top Plate



Rigid Top Plate



- 10" for 3" Wide Wheels
- 15-3/8" for 4 to 5" Wide Wheels
- 17-1/4" for 6" Wide Wheels
- 23-1/4" for 9" Wide Wheels

FEATURES

- **Top Plate:** 3/4" thick AISI 1045 steel one-piece forging precision machined and through-hardened for long life
- **Yoke Base:** AISI 1045 steel forging welded using 100,000 psi weld filler to 3/4" thick adapter plate
- **Swivel Section:** 7/8" ball bearings mounted in a 7" diameter precision machined raceway. Zerk in swivel section
- **Legs:** 3/4" thick through-hardened steel welded to yoke base using 100,000 psi weld filler
- **Axle:** 1-1/4" diameter
- Alternate or custom caster configurations available

BEARING OPTIONS



RIG OPTIONS

- Notched yoke base for swivel locks specify **NY850**
- Spring-loaded models available, consult factory. Single models available also

BRAKE OPTIONS

Face Contact specify **F**



Hand Operated Detachable Swivel Lock specify **L**



Hand Operated Swivel Lock specify **SL8000000**

+ For swivel models add "S", for rigid model add "R" to end of base caster number.

Wheel Diameter (Inches)	Tread Width (Inches)	Capacity (Lbs) (Based on normal operation)	Overall Height (Inches)	Swivel Lead (Inches)	Wheel Type	Base Caster Number+ Roller Bearing (01), Tapered Roller Bearing (09)
850 Shockmaster Kingpinless Dual Wheel						
6	3	30000	11	3 1/4	HD Drop Forged	850FH06509
10	4	30000	14 3/4	3 1/4	HD Drop Forged	850FH10709
12	4	3200	15 3/4	3 1/4	Moldon Rubber/Iron Core	850MR12701
12	4	9600	15 3/4	3 1/4	Polyurethane/Iron Core	850PY12701
12	4	9600	15 3/4	3 1/4	Thick Tread Polyurethane	850PX12701
12	4	6600	15 3/4	3 1/4	Press-on Polyurethane	850OG12709
12	5	12000	15 3/4	3 1/4	Thick Tread Polyurethane	850PX12801
12	6	15000	15 3/4	3 1/4	Polyurethane/Aluminum	850PA12909
16	4	4000	19 3/4	4 1/2	Moldon Rubber/Iron Core	850MR16701
16	4	11940	19 3/4	4 1/2	Polyurethane/Iron Core	850PY16701
16	4	11940	19 3/4	4 1/2	Thick Tread Polyurethane	850PX16701
16	5	5140	19 3/4	4 1/2	Moldon Rubber/Iron Core	850MR16801
16	5	15400	19 3/4	4 1/2	Polyurethane/Iron Core	850PY16801
16	5	15400	19 3/4	4 1/2	Thick Tread Polyurethane	850PX16801
18	5	5600	22	5 1/4	Moldon Rubber/Iron Core	850MR18801
18	5	16800	22	5 1/4	Polyurethane/Iron Core	850PY18801
18	5	10340	22	4 1/2	Press-on Polyurethane	850OG18809
18	9	20000	22	4 1/2	Press-on Polyurethane	850OG18909

WHEN FAILURE IS NOT AN OPTION...

The preferred caster for the aviation and group support industry – able to handle your most abusive application!